

OFFICIAL

**24/00255/LOCAL – Frontage alterations,
Platform Block 1, 32 Anderston Quay Glasgow**

Item 2

1st April 2025

Photos

Front Elevation from Anderston Quay



West Elevation



OFFICIAL

OFFICIAL

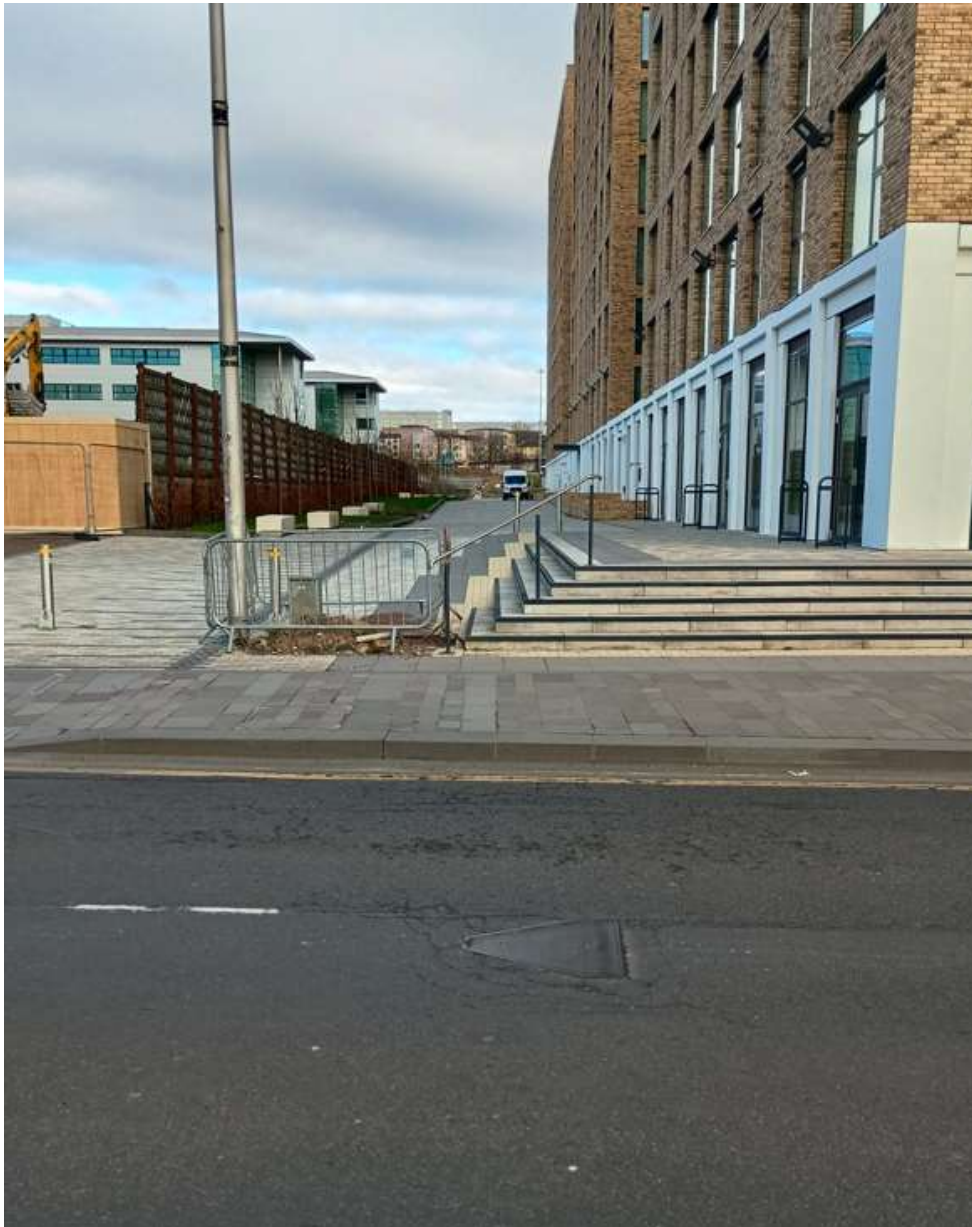
North Elevation – Entrance to Residential Block



OFFICIAL

OFFICIAL

Pedestrian Walkway / Amenity Space – Looking North



OFFICIAL

OFFICIAL

Pedestrian walkway – looking south towards the River Clyde



OFFICIAL