



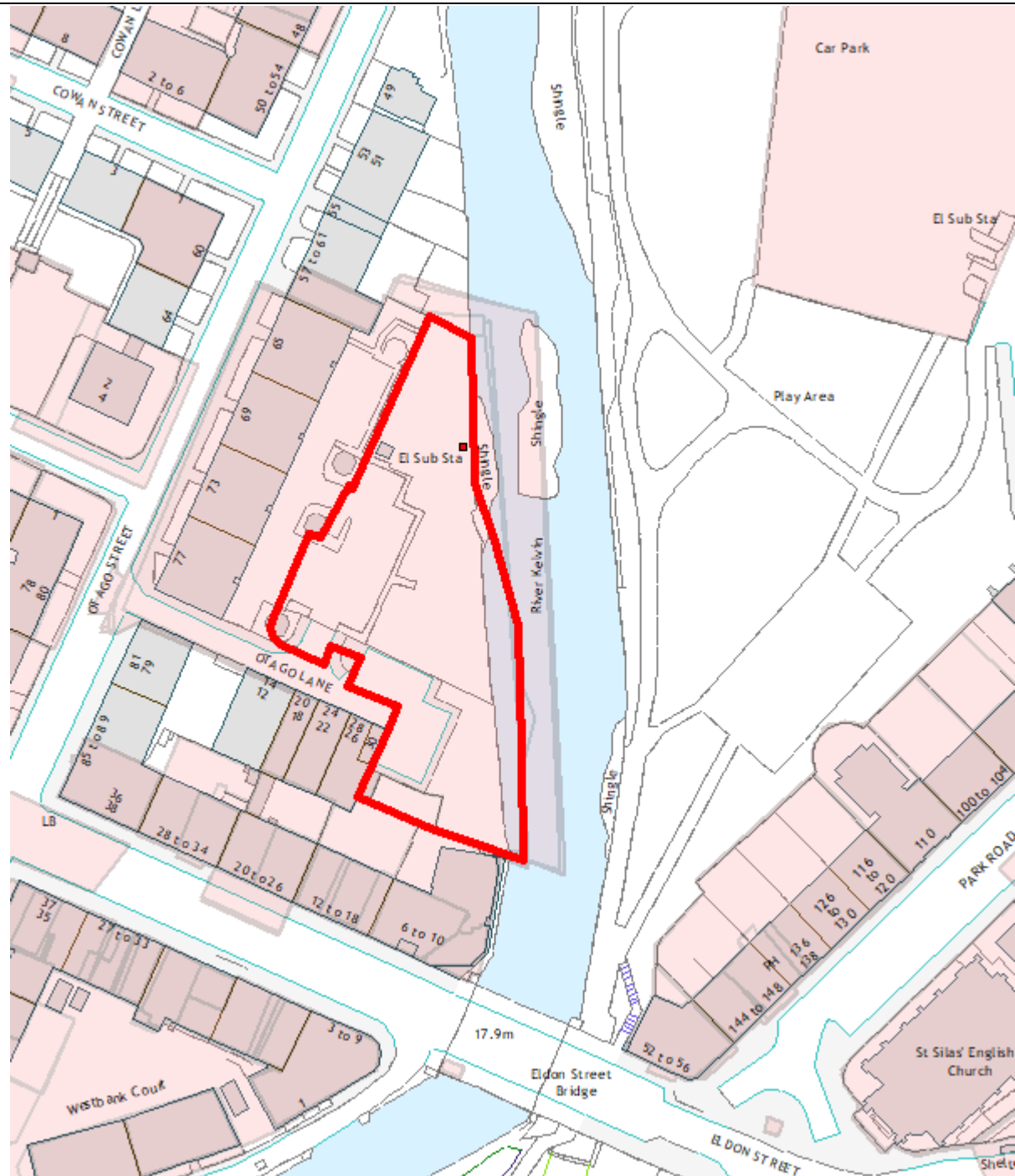
Neighbourhoods, Regeneration  
and Sustainability  
Glasgow City Council  
Exchange House  
231 George Street  
Glasgow G1 1RX  
Head of Planning: Sarah Shaw

Reference No: 24/02217/FUL

Address: Land To East Of 63-77, Otago Street, Glasgow

Ward: 11, Hillhead

### Indicative Site Location



© Crown copyright and database rights 2024 OS AC0000849454



Location of Site (for details refer to report)