



Glasgow City Council

Education, Skills and Early Years City Policy Committee

Report by Executive Director of Education Services

Contact: Jean Miller Ext: 70204

**School Leaver Follow-up
Glasgow Destinations**

Purpose of Report:

To report to the committee on Glasgow's school leaver follow-up destinations and our activities to support this key area.

Recommendations:

Committee is invited to consider the report and note the continued emphasis and commitment to ensuring our young people will have access to positive, sustained destinations as they leave school.

Ward No(s):

Citywide: ✓

Local member(s) advised: Yes ☐ No ☐ consulted: Yes ☐ No ☐

PLEASE NOTE THE FOLLOWING:

Any Ordnance Survey mapping included within this Report is provided by Glasgow City Council under licence from the Ordnance Survey in order to fulfil its public function to make available Council-held public domain information. Persons viewing this mapping should contact Ordnance Survey Copyright for advice where they wish to licence Ordnance Survey mapping/map data for their own use. The OS web site can be found at <http://www.ordnancesurvey.co.uk> "

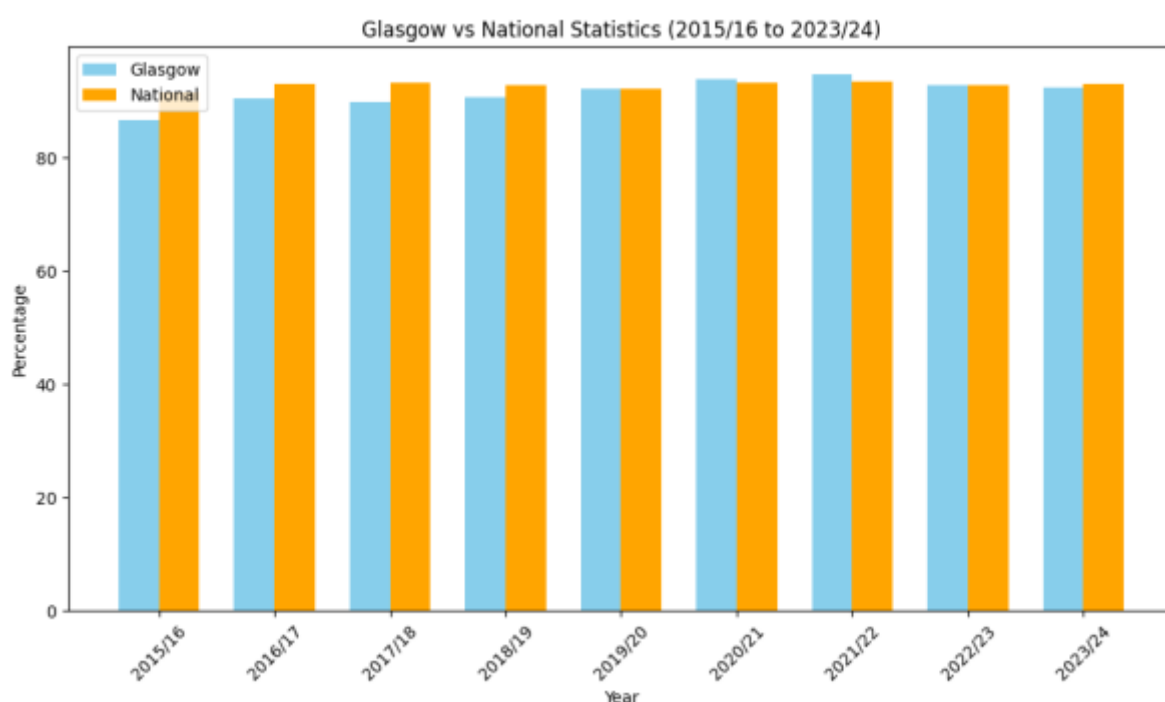
If accessing this Report via the Internet, please note that any mapping is for illustrative purposes only and is not true to any marked scale

1 Background

- 1.1 The School Leavers Follow Up (SLFU) destinations report is a statistical return undertaken by Skills Development Scotland on behalf of the Scottish Government. The return follows up on the young people whose destinations were collected in October 2024.
- 1.2 The follow up destinations for all young people who left school in 2024 were collected in April 2025 and published in June 2025. It provides a comparison between the initial destination for Glasgow's school leavers and their destination six months later. The statistics are for all destination categories in the School Leavers Follow Up.

2 Summary of findings

- 2.1 Overall, the number of young people who sustained their positive destination was 92.3% which was 3.4%, lower than our initial destination figure of 95.7%. The final statistic captured in April 2025 is marginally down on the previous year but the drop off of 3.4% is better than last year's drop off which was 5%. It was also in line with the national difference.
- 2.2 The final Glasgow figure of 92.3% is only slightly below the national figure of 93.1%. However, the graph also shows the significant progress over many years of closing the gap in comparison to the national figures.



[Summary statistics for follow-up leaver destinations, no. 7: 2025 edition, published on 17th June 2025.](#)

2.3 The next table shows the difference between the initial statistics in October 2024 and then the follow up in April 2025.



[Summary statistics for follow-up leaver destinations, no. 7: 2025 edition, published on 17th June 2025.](#)

2.4 The next table shows the actual destinations of our school leavers and how they have changed over the years.

Glasgow Follow-up Destinations												
	Total Leavers	Positive Destination	Higher Education	Further Education	Training	Employment	Voluntary Work	Activity Agreements	Personal Skills Development	Unemployed Seeking	Unemployed Not Seeking	Unknown
15/16	4542	86.7%	31.2%	24.1%	2.9%	26.7%	0.4%	0.6%	0.8%	8.5%	2.6%	2.2%
16/17	4472	90.4%	34.0%	28.6%	2.8%	23.4%	0.3%	0.5%	0.8%	6.3%	2.2%	1.1%
17/18	4345	89.9%	36.8%	25.5%	2.9%	23.2%	0.5%	0.5%	0.5%	6.0%	2.8%	1.4%
18/19	4346	90.6%	36.6%	26.7%	3.1%	23.1%	0.4%	N/A	0.6%	6.7%	2.4%	0.3%
19/20	4294	92.2%	40.0%	26.5%	5.5%	16.0%	0.5%	N/A	3.6%	4.7%	3.0%	0.1%
20/21	4569	93.8%	38.7%	21.6%	5.4%	26.2%	0.6%	N/A	1.2%	3.9%	2.4%	0.0%
21/22	4975	94.8%	36.4%	25.0%	6.5%	25.4%	0.6%	N/A	1.0%	3.1%	2.0%	0.1%
22/23	4998	92.7%	37.9%	23.7%	4.5%	25.4%	0.5%	N/A	0.7%	4.9%	2.3%	0.0%
23/24	5231	92.3%	39.1%	24.8%	4.9%	21.7%	0.8%	N/A	1.0%	4.6%	3.0%	0.1%

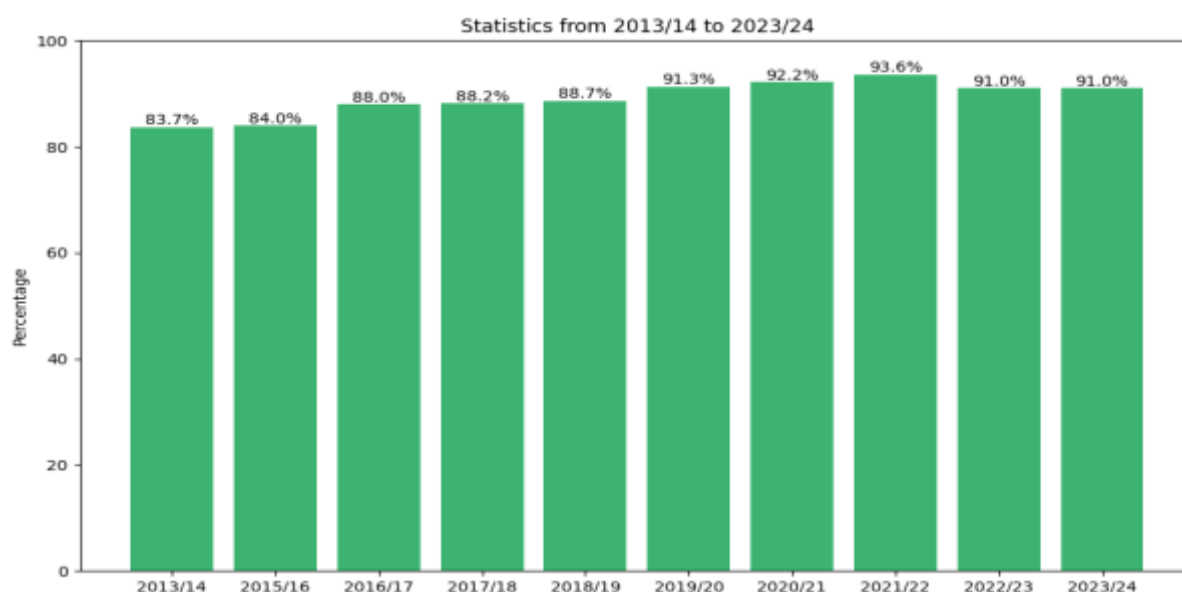
- 2.5 Last year we reported that the Glasgow statistic for Higher Education was 37.9% which was above the national figure of 37.1%. This year's figure is 39.1% which is our second highest ever and, yet again, we are above the national average of 38.1%. Our schools have worked very hard to achieve this and they are supported by staff in the Toward's Better Future team who link with Higher Education providers to access a range of opportunities. Of course, it is also supported by our continued prioritisation of raising attainment and celebrating achievement across all our schools.
- 2.6 We still have an above national average amount of young people going into Further Education at 24.8% compared to 21.9% nationally. We continue to work in close partnership, particularly with our Glasgow colleges, to provide opportunities to link with the colleges including through our Senior phase college vocational programme.
- 2.7 With the latter two categories increasing, this has impacted the employment statistic which has decreased to 21.7% from 25.4% last year. The national level has also decreased from 31.2% to 28.8%. Our figure for unemployed seeking has decreased from 4.9% to 4.6% but the national level is 3.5%. This is a frustrating figure since it represents young people who are seeking to engage with either employment or continue their education, and ourselves and our partners always support these young people beyond snapshot.

3 Equalities

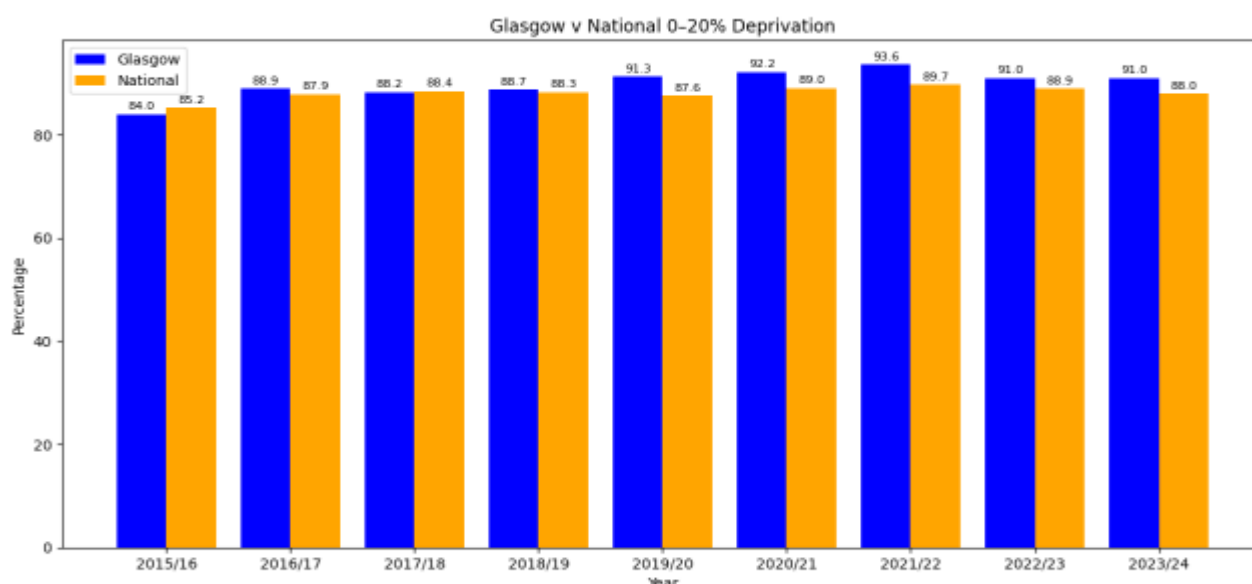
- 3.1 The first lens we will look at is the impact of deprivation. This table shows the difference in the statistics for young people living in Glasgow according to their SIMD deprivation ratings. The first column of numbers is those in a positive destination and the second is the total number of leavers. You will note that the highest deprivation category i.e. 0-20% is 57% of our total leavers.

2023-24	260	Glasgow City	0-20% (Most Deprived)	2,708	2,975	91.0
2023-24	260	Glasgow City	20-40%	899	976	92.1
2023-24	260	Glasgow City	40-60%	458	486	94.2
2023-24	260	Glasgow City	60-80%	446	465	95.9
2023-24	260	Glasgow City	80-100% (Least Deprived)	319	329	97.0
2023-24	260	Glasgow City	Total	4,830	5,231	92.3

- 3.2 The next table shows the percentage of young people from the most deprived postcodes who are in positive destinations over the years. It is similar to last year and always runs slightly below our overall statistic.



- 3.3 Since the overall Glasgow percentage is 92.3%, this shows that young people from our most deprived post codes are 1.3% less likely to be in a positive destination, an improvement on last year which was 1.7%.



- 3.4 The graph above compares the Glasgow statistic (blue) for 0-20% most deprived with the national one (orange). For six years now Glasgow has been above national levels with the positive gap of 2.3%. Indeed, the national level declined this year whilst Glasgow's remained the same. Again, this is representative of 57% of our young people.

- 3.5 Whilst there is a range of data for specific groups it is actually difficult to determine trends or even where the highest risk lies. For example, you may expect young people with the lowest qualifications to be most at risk but the statistics do not bear this out. It is also wrong to assume that schools with the highest percentage of young people from the most deprived areas will have lower positive destination statistics. It is a mixed picture but over 25 of our secondaries have statistics above 90%. The Glasgow way is to aim for 100% of our leavers in positive, sustained destinations and we focus on every single young person to achieve this.

4 Towards Better Futures

- 4.1 Glasgow Education Services continues to have a team dedicated to supporting our young people to positive sustained destinations. They work closely with our schools and with a range of partnerships including Glasgow's Chamber of Commerce and its DYW regional team, Skills Development Scotland, our partners in Glasgow Colleges and Universities and Glasgow's Local Employability Partnership. Their approach is universal and the DYW coordinators funded by the DYW Glasgow Regional team which gets funding from Scottish Government, work directly in our schools to specifically support greater employer engagement. This helps to ensure that our young people are more work aware and know more about the changing employment landscape particularly in relation to our local economy.
- 4.2 Our partnership with the Chamber of Commerce is mainly through the links with the DYW Glasgow regional team. At a recent event hosting employers, the team showcased some of the very bespoke activities we are involved with including our work aware programme and the support of the Young Ambassadors programme. Between April 2024 and March 2025 they supported 31,601 young people to link with 628 different businesses.

At this point Council will be shown a recent video made by the Chamber of Commerce DYW Glasgow regional team highlighting some of the excellent work they do in partnership with our schools.

- 4.3 The Towards Better Futures team also continues to support schools with interventions which are more targeted and can offer a range of more bespoke opportunities depending on the needs of young people. This year they have added new developments and activities which include;
- An increase in ESOL language classes
 - Staffing training and development to support working with young people with additional support needs. This has been developed with the support of external funding.
 - Increase in Work Aware Programmes delivered by DYWG

The team continue to work closely with schools, listening to young people about their needs and what would support them. They continually evolve and

despite being small in number, their impact is significant. Their relentless focus on supporting schools is appreciated by colleagues and partners alike.

- 4.4 More information on the Towards Better Futures strategy and team activities can be accessed using the following link;

<https://www.towardsbetterfutures.com/>

Resource Implications:

<i>Financial:</i>	Within existing resources, effective deployment and management of grant funding.
<i>Legal:</i>	NA
<i>Personnel:</i>	Staff team related to Towards Better Futures Strategy
<i>Procurement:</i>	N/A except in relation to elements of grant funding

Council Strategic Plan:	Grand Challenge 1-Reduce poverty and Inequality in our city Mission 3 - Raise attainment amongst Glasgow's children and young people Grand Challenge 2 - Increase opportunity and prosperity for all our citizens Mission 1 - Support Glasgow residents into sustainable and fair work
--------------------------------	---

Equality and Socio-Economic Impacts:

<i>Does the proposal support the Council's Equality Outcomes 2021-25? Please specify.</i>	Outcome 14 - Glasgow City Council (Education Services) has continued to improve outcomes in relation to attainment and achievement for children and young people including those experiencing socio-economic disadvantage, those for whom English is not their first language, those who identify as black and minority ethnic, and disabled children and young people
<i>What are the potential equality impacts as a result of this report?</i>	There is a positive impact since the activities in this area help young people leaving school to embark on a positive, sustained destination.

Please highlight if the policy/proposal will help address socio-economic disadvantage.

The work in schools, supported by the Towards Better Futures team, is making a significant difference to improving outcomes and opportunities for our young people.

Climate Impacts:

Does the proposal support any Climate Plan actions? Please specify:

N/A except that we work with Glasgow's Chamber of Commerce and link with some employers who are committed to supporting positive climate action activities

What are the potential climate impacts as a result of this proposal?

N/A

Will the proposal contribute to Glasgow's net zero carbon target?

N/A

Privacy and Data Protection Impacts:

Are there any potential data protection impacts as a result of this report
Y/N No

If Yes, please confirm that a Data Protection Impact Assessment (DPIA) has been carried out

5 Recommendations

Committee is invited to consider the report and note the continued emphasis and commitment to ensuring our young people will have access to positive, sustained destinations as they leave school.