



Glasgow City Council

City Administration Committee

Item 4

30th January 2025

Report by Councillor Ruairi Kelly, City Convener for Housing, Development, Built Heritage and Land Use

Contact: George Gillespie, Executive Director

IMPLEMENTATION OF CITY PLAN POLICY ENV2 /IPG

**CATHKIN BRAES MOUNTAIN BIKE TRAILS –
CYCLING INFRASTRUCTURE**

Purpose of Report:

To seek CAC approval to allocate £74,250 of ENV2 Outdoor Sport funding in support of the provision and maintenance of new cycling infrastructure (“Container Hub”) at Cathkin Braes Country Park’s Mountain Bike Trails.

Recommendations:

The committee is asked to:

- i) Note the content of the report.
- ii) Note the contribution from the Scottish Cycling Facilities Fund and
- iii) Approve the allocation of £74,250 of ENV2 Outdoor Sport funds in support of the provision and maintenance of new cycling infrastructure at Cathkin Braes Country Park’s Mountain Bike Trails.

Ward No(s): 1 and 2

Citywide:

Local member(s) advised: Yes ☐ No ☐ consulted: Yes ☐ No ☐

1. Purpose of Report

- 1.1 Members are asked to support the allocation of £74,250 of Outdoor Sport ENV2 receipts towards the provision and maintenance of new cycling infrastructure at Cathkin Braes Country Park Mountain Bike Trails.
- 1.2 The total allocation comprises a **capital** sum of £59,400 towards construction works and a **revenue** sum of £14,850 which acts as a contribution towards ongoing maintenance over a 10-year period.
- 1.3 In accordance with established procedures relating to policy ENV2 these proposals were approved by the Projects Assessment Group (PAG) on 29th October 2021 and subsequent consultation with elected members representing Ward No's 1 and 2.

2. Background

- 2.1 Glasgow has announced itself as a world leading city as a host of major cycling sporting events, as evidenced by the hosting of the 2014 Commonwealth Games, the 2018 European Championships and the 2023 UCI Cycling World Championships. This is also evidenced in the inclusion of track cycling in the forthcoming 2026 Glasgow Commonwealth Games.
- 2.2 There is an intrinsic link between major events and an increase in grassroots participation, with spectators at cycling events motivated to either try out or return to cycling.
- 2.3 Glasgow can take pride in the focus it places on delivering a lasting legacy of sports participation on the back of hosting such prestigious sporting events. Over the last ten years Glasgow has enjoyed a surge in the number of people taking up cycling for a variety of reasons, from leisure to commuting, and we want to continue this growth well into the future.
- 2.4 The emergence of a Scottish Cycling Facilities Fund – administered by **sportscotland** - provides an opportunity to secure external capital funding to enhance the city's cycle sport infrastructure.
- 2.5 The proposed addition of ancillary WC and storage facilities at Cathkin Braes Mountain Bike Trails has been identified by Glasgow Life, Cycling Scotland and **sportscotland** as a priority in order to enhance the customer experience and further develop use by both clubs and schools.

3. Project Proposal - Cathkin Braes Country Park – Mountain Bike Trails

- 3.1 The Mountain Bike trails at Cathkin Braes consist of a world class (UCI standard) series of red, black and blue trails, an entry level "Pump Track", skills area and car park. However, the absence of built infrastructure to support club and community use of the trails has long been recognised as the

missing piece in the jigsaw, which if addressed, will significantly enhance the MBT experience for riders and spectators.

- 3.2 The Scottish Cycling Facilities Fund provides an opportunity to revisit the case for built infrastructure at Cathkin Braes.
- 3.3 This proposal seeks support for the provision of a “container hub” on land adjacent to the existing start finish loop. The full aspiration is to provide toilets, storage, changing, a small café and a bike wash and bicycle maintenance zone, thereby providing a base from which clubs/groups can operate and grow the sport. The key challenge however is in identifying a sustainable operational model for the different elements of the container hub, and although dialogue is continuing with potential operational partners including Neighbourhoods, Sustainability and Regeneration (NRS), Cordia, Scottish Cycling and Glasgow Riderz, until such time as a long-term operational model can be identified, the delivery of hub facilities will be phased to reflect what is manageable in the short term.
- 3.4 This first phase proposal includes the following elements:
- Bike Stores (1 x club, 1 x schools) – to support group instruction
 - Maintenance Store (tools/trail maintenance equipment)
 - Compostable Toilets – in support of use by individuals, clubs and schools.
 - Use of solar or battery power – no requirement for utility connections.
 - Civil engineering work to facilitate path links to the pump track and trails.
 - Signage
- 3.5 In the short term NRS Parks will adopt operational responsibility for the above facilities, aided by the revenue contribution from ENV2 (see below). Opportunities are being fully explored with local community groups for their long-term involvement with the facility and will be incorporated into the ongoing delivery of the project.
- 3.6 The attached pdf illustrates the location of the proposed “container hub” – see appendix 1

4. Capital Costs

- 4.1 The outline costs in the table overleaf are based on anticipated build costs associated with the use of City Building Glasgow as main contractor:

Item	Capital Cost estimate (£)
Bike Stores	48,000
Power Supply (Battery or solar)	8,000
Accessibility Upgrade	10,500
Toilet facilities	22,000
Security Fencing Allowance	6,500
Signage	2,000
Sub-Total	97,000

Preliminaries	10,000
Main Contractor Mark-Up (included)	0
Contingency (5.0%)	5,350
Design Fees (6.0%)	6,450
TOTAL	118,800

- 4.2 Once a tender price is received from, and agreed with City Building Contracts, draw-down of ENV2 capital funding from GCC Finance will take place. Should the tender price be lower than the pre-tender estimate, any ENV2 funding approved by GCC but not required for project delivery will be retained by GCC Finance for re-allocation to other outdoor sport projects that emerge in the future.

5. Capital and Revenue Funding

- 5.1 **Sport** Scotland (Scottish Cycling Facilities Fund) has agreed to contribute 50% of the estimated **capital** cost of £118,000 (£59,400), with the capital balance of £59,400 being sought from Developer Contributions (City Plan Policy ENV2) from the South Sector of the city.

CAPITAL Funding Source	(£)
GCC ENV2 (Outdoor Sport)	59,400
Scottish Cycling Facilities Fund	59,400
TOTAL	118,800

- 5.2 The linked revenue allocation of £14,850 will contribute towards annual maintenance costs for a number of years and it is hoped that additional voluntary assistance will be forthcoming from the mountain biking community.

REVENUE Funding Source	(£)
GCC ENV2 (Outdoor Sport)	14,850

6. ENV2 Funding Sources

- 6.1 City Plan ENV2 policy supports the strategic use of Outdoor Sport ENV2 funds within the same City Plan Sector. The principal capital receipt targeted is Receipt No 764, generated from the site of the former Simshill Primary School in Ward 1, Linn. A small balance of capital funding is sought from receipt No 776, Boydstone Road, Cowglen.
- 6.2 It is proposed that a total sum of £74,250 be sourced from the following ENV2 receipts:

Ref No	Address	Ward No	Outdoor Sport (formal) (£ cap)	Outdoor Sport (formal) (£ rev)	TOTAL (£) (Cap + Rev)
764	Formerly Simshill Primary	1	51,349	12,837	64,186
776	Boydstone Rd, Cowglen	2	8,051	2,013	10,064
	TOTAL		59,400	14,850	74,250

7. Assessment against Policy

- 7.1 The Cathkin Braes Country Park proposal will significantly enhance the attractiveness of the international standard mountain bike trails for individuals, clubs and schools, by providing basic support facilities (i.e. toilets and storage) as the first phase of a “container hub”. Its delivery will further enhance Glasgow’s cycle sport offer and further underline the role of cycling at the heart of a sustainable city.
- 7.2 This proposal builds on the cycling legacy from the 2018 European Championships and 2023 UCI World Championships by supporting Glasgow’s ongoing efforts to encourage cycling as a sport of choice and as an active sustainable mode of travel.

8. Member Consultation

- 8.1 In accordance with established procedures relating to policy ENV2, the proposed use of the targeted ENV2 receipts was approved in principle by the corporate Projects Assessment Group on 29th October 2021.
- 8.2 Consultation conducted in January 2022 with elected members representing multi-member Wards 1 and 2 resulted in no material objections to the proposed use of ENV2 receipts.

9. Community Engagement

- 9.1 Consultation over the outline proposals at Cathkin Braes have to date been limited to key user groups and potential operational partners, however NRS and Glasgow Life will engage with local agencies including the relevant Community Council’s and Area Committee to invite comment / feedback on the finalised design proposals.

10. Council Approvals

- 10.1 In accordance with ENV2 policy, the City Council’s City Administration Committee has responsibility for approving requests for use of ENV2 funds equal to £50,000 and above.

11. Timeframe for Delivery

11.1 Glasgow Life has developed a specification of works for a Design and Build contract for the container hub at Cathkin Braes Mountain Bike Trails.

11.2 City Building Glasgow has agreed to act as the Principal Contractor.

11.3 Subject to funding approval, project delivery will involve the following steps:

- Contract award
- Design proposal received from City Building Glasgow
- Pre-planning consultation with local stakeholders.
- Amendments to design proposal (if required)
- Submit planning application – approximately 12-15 weeks for decision.
- Subject to Planning Approval, the estimated commencement of construction works at Cathkin Braes would be within 2 months of planning approval.

12.0 Policy & Resource Implications

Resource Implications:

Financial:

This proposal seeks approval for the use of £74,250 of ENV2 funds (capital and revenue) to support the provision and maintenance of new cycling infrastructure at Cathkin Braes Country Park. There will be no requirement for additional GCC capital or revenue funding.

Legal:

The procurement and delivery methods will be undertaken in line with current policies and guidelines.

Personnel:

None.

Procurement:

Procurement will be through the standard approved mechanisms for this type of work.

Council Strategic Plan 2022-2027:

Grand Challenge 1: Reduce Poverty and Inequality in our Communities

Mission 3: Improve the health and wellbeing of our local communities:

Work with partners to promote and support people in Glasgow to achieve improved physical, mental and emotional health and well-being.

Introduce community referrals to encourage wider participation in sport, culture and physical

activity and improve collaboration within the health and wellbeing sector.

Grand Challenge 2 – Increase Opportunity and Prosperity for all our citizens

Mission 3: Raise Attainment amongst Glasgow's children and young people: This proposal will enable young people to receive instruction in bike handling skills and develop confidence that will hopefully deliver long-lasting health and fitness benefits.

Mission 3: Support Play and Outdoor Education Opportunities to participate in cycling will be increased for all of Glasgow's resident's including people with people with protected characteristics.

Equality and Socio-Economic Impacts

Does the proposal support the Council's Equality Outcomes 2021-25?

Outcome No 6: The importance of tackling social isolation and loneliness is recognised and prioritised by the City Council. The enhancement of support facilities at Cathkin Braes MBT will help to increase cycle-based sports participation by both individuals and groups.

Outcome No 10: Improvements in the mental and physical health and wellbeing of the city's workforce and wider population is a core cross-service priority for GCC and its ALEO partners. Participation in healthy outdoor pursuits will be supported by investment in infrastructure at Cathkin Braes MTB.

What are the potential equality impacts as a result of this report?

An EQIA Screening form has been completed and the potential equality impacts are predominantly positive. This proposals will deliver both grassroots regeneration that empowers the younger age groups, but also continually raise the profile of Glasgow on an international stage. This additional work will benefit communities and citizens equally and will have no impact on the GCC's duties under the Equality Act 2010 Public Sector Equality Duty Regulations.

Please highlight if the policy/proposal will help

This proposal helps to enhance the customer experience at a strategically significant outdoor

address socio-economic disadvantage.

sports facility within Ward No1 (Castlemilk), which contains multiple areas with a high SIMD rating (ie most deprived 5%).

Climate Impacts:

Does the proposal support any Climate Plan actions? Please specify:

Theme 3 (Well Connected and Thriving City):
This proposal will support efforts towards the decarbonization of transport by encouraging cycling in all its forms.

Theme 4 (Health and Well-Being): This proposal will support equitable access to good quality open space and associated infrastructure.

What are the potential climate impacts as a result of this proposal?

No adverse impacts are expected from this proposal. Any impacts are likely to be positive by encouraging greater use of bicycles, both as a means of transport and a leisure activity.

Will the proposal contribute to Glasgow's net zero carbon target?

Through the installation of compostable toilets and the use of second-hand mountain bikes to encourage participation, this proposal actively contributes to the city's efforts to transition to a circular economy.

Privacy and Data Protection impacts:

Are there any data protection impacts as a result of this report? Y/N

No impacts are expected from this proposal.

13.0 Recommendations

It is recommended that Committee:

- i) Note the content of the report.
- ii) Note the contribution from the Scottish Cycling Facilities Fund and
- iii) Approve the allocation of £74,250 of ENV2 Outdoor Sport funds in support of the provision and maintenance of new cycling infrastructure at Cathkin Braes Country Park's Mountain Bike Trails.

Appendix 1 – Proposed New Layout

CYCLING FACILITIES FUND



UPGRADE

CLUB AND HUB DEVELOPMENT: POTENTIAL CATHKIN BRAES PUBLIC PARK

-Cathkin Braes public park situated in the South side of Glasgow with a pump track and mountain bike trails.

-Opportunity for facilities development including toilets, bike hire, workshop and upgrades for access.

EXISTING INFRASTRUCTURE:

TRAIL-		Existing Mountain Bike Trail
RED OUTLINE -		Existing competition, event space
GREEN OUTLINE -		Existing Pump Track
PINK OUTLINE-		Existing Car Park

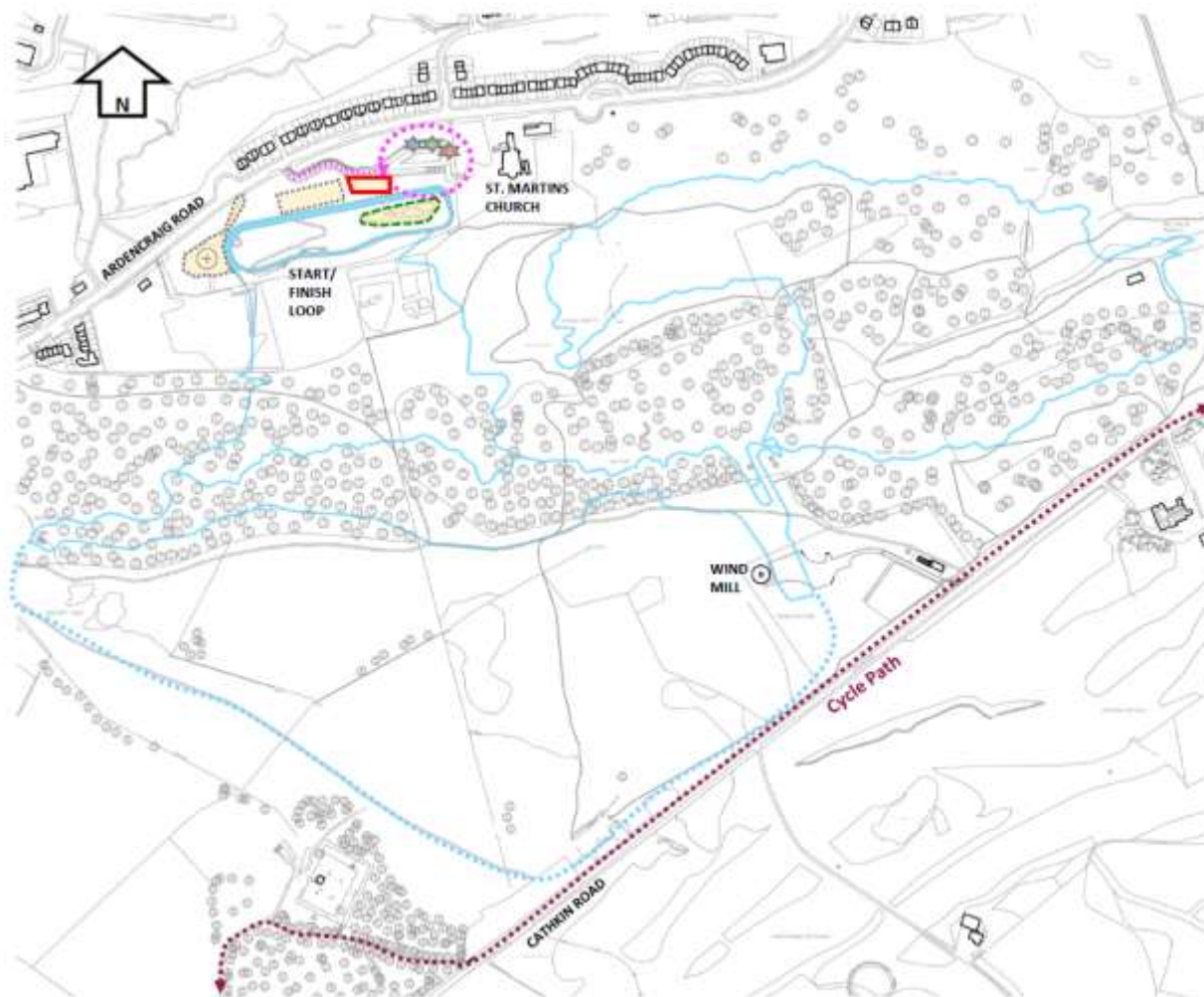
NEW DEVELOPMENT:

Toilets		Compostable toilets
Workshop		Hub and Workshop Space
Storage		Bike & Equipment Storage

TRAIL PROXIMITY:

Cycle Route		National Cycle Network
New Route		Route to Centralised Facilities

Central Facilities - See Overleaf.



CYCLING FACILITIES FUND



UPGRADE

CLUB AND HUB DEVELOPMENT: POTENTIAL
CATHKIN BRAES PUBLIC PARK



Bike Equipment and Storage
Container Unit



Container Unit and Workshop with
power infrastructure.



Waterless compostable toilet
facilities

