

Item 2

30th September 2021



Glasgow City Council

Education, Skills and Early Years City Policy Committee

Report by Executive Director Education Services

Contact: Jim Wilson Ext: 74561

HYNDLAND SECONDARY CATCHMENT AREA

Purpose of Report:

To advise Committee of the current catchment area of Hyndland Secondary School and some potential alternative models that, if implemented, would have a consequential effect on some primary schools; primarily Scotstoun Primary

Recommendations:

The Committee is asked to consider the content of this report and the implications of changing the current catchment areas.

Ward No(s): 12, 13, 14, 23

Citywide:

Local member(s) advised: Yes No consulted: Yes No

PLEASE NOTE THE FOLLOWING:

Any Ordnance Survey mapping included within this Report is provided by Glasgow City Council under licence from the Ordnance Survey in order to fulfil its public function to make available Council-held public domain information. Persons viewing this mapping should contact Ordnance Survey Copyright for advice where they wish to licence Ordnance Survey mapping/map data for their own use. The OS web site can be found at <http://www.ordnancesurvey.co.uk> "

If accessing this Report via the Internet, please note that any mapping is for illustrative purposes only and is not true to any marked scale

BACKGROUND

- 1.1 Hyndland Secondary School is a non-denominational, comprehensive secondary school located in the West End of Glasgow.
- 1.2 Hyndland Secondary is a successful and popular school. It has four associated primary schools: Broomhill Primary, Hyndland Primary, Thornwood Primary, and Whiteinch Primary. If the children attending these schools live in the catchment area of Hyndland Secondary School, then they are entitled to transition to Hyndland Secondary School.
- 1.3 The school has a notional maximum capacity of 950, with a roll of 1027 (as at 2020 census). The school roll consistently includes around 40% placing requests.
- 1.4 Entry criteria for schools are determined by local authorities. Local authorities throughout Scotland adopt a range of differing entry criteria. For schools in Glasgow the key entrance criteria for any mainstream secondary school is based upon a defined geographical catchment area (a 'delineated' area). Every address within Glasgow has a catchment area (or shared catchment area) for both a denominational school, a non-denominational school and a Gaelic Medium school.
- 1.5 Hyndland Secondary School's catchment area is shown in Appendix A
- 1.6 When Victoria Drive Secondary school closed in 1998, Scotstoun Primary school became associated with Knightswood Secondary School. For a period of seven years, pupils attending Scotstoun primary school were granted the right to a priority placing request to any secondary school in the city. Some parents from Scotstoun used this right to access places at Hyndland Secondary School.
- 1.7 However, as can be noted from the table in Appendix D, and in section 2.3, in recent years increasing numbers of children have been transferring to their catchment school; that is, Knightswood Secondary School.

MORE RECENTLY

- 2.1 On the 24th of January 2019, the City Administration Committee accepted the recommendation from officers relating to Hyndland; that is:

'Officers agree that the relatively small size of the catchment area results in a high proportion of placing requests. There would be a reduced administrative burden if there were fewer placing requests. To change the catchment area would require a new statutory consultation under the Schools (Consultation) (Scotland) Act 2010. Officers recommend that consideration is given to scoping out a consultation to amend the catchment area of Hyndland Secondary School which would have the effect of reducing the number of placing requests'.

- 2.2 On the basis of this, officers have now reviewed and analysed rolls, catchment-areas and placing requests that directly or indirectly affect Hyndland Secondary School. This includes the consideration of actual and historical trends from nearby primary schools.
- 2.3 Factors considered as part of the scoping exercise included:
- The number of placing requests to Hyndland, including proportionate to the school roll, over the last 5 years.
 - The origin of those requests i.e. the primary schools they were from.
 - The number of placing requests to Knightswood, including proportionate to the school roll, over the last 5 years.

Appendices F and G detail the placing requests made to both Hyndland Secondary and Knightswood Secondary over the past 5 years. These appendices in themselves detail the complexity of altering the current arrangements as, for example, there were placing requests to Hyndland Secondary from 34 different primary schools in session 2019/20. This is not unusual. In addition, over a 5 year period (2015/16 to 2019/20) the number of pupils from Scotstoun Primary starting in S1 at Hyndland Secondary was 25, 13, 14, 10, and 7 respectively. This is a reducing number.

- 2.4 There is, therefore, in officers' opinion, not a strong argument to alter the current situation based upon the number of children transitioning. That is, Scotstoun Primary School should not form part of the catchment area of Hyndland Secondary School. In addition, the catchment area for Scotstoun Primary School is extensive and a notable number of families live further from Hyndland than from Knightswood Secondary School.
- 2.5 If a local authority wishes to change a catchment area, then a statutory public consultation needs to be held under the Schools (Consultation) (Scotland) Act 2010/ As part of this, Education Services would be required to produce a report on the 'educational benefits' of changing the catchment area of Hyndland Secondary and/or Scotstoun Primary. Education Scotland (HMI) would thereafter be required to report on the educational benefits for all persons affected (this would include children from all the other schools who submit placing requests etc).
- 2.6 In section 3, officers have carried out an analysis of options.
- 2.7 Details included for consideration are:

Appendix A – Hyndland Secondary School Catchment Area

Appendix B – Knightswood Secondary School Catchment Area

Appendix C – Scotstoun Primary School Catchment Area

Appendix D - Scotstoun Primary P7 to S1 Analysis

Appendix D shows the last 5 years' of P7 pupils from Scotstoun Primary; aligned with the Secondary school they attended the following year.

Appendix E - Hyndland Secondary and Knightswood Secondary – 10 Year Roll Projections

(please note that within this paper, due to both the pandemic and standard time lag of data production; figures are 1 year behind 'normal').

Table 1 – These are the master projections (2020 census based) showing the current projections for Hyndland and Knightswood Secondary with Scotstoun Primary continuing to be an associated primary of Knightswood Secondary.

Table 2 – Roll projections with Scotstoun Primary, if aligned to Hyndland Secondary. This table also shows 100% of the projected P7 pupils transferring to S1 each year. I.e. no placing requests in or out granted (this is extremely unlikely and highlights the statistical uncertainty of this type of analysis).

Table 3 – Roll projections with Scotstoun Primary aligned to Hyndland Secondary. This table uses the current P7 – S1 transfer rates (i.e. placing requests) for both secondary schools to project the number of P7 pupils in the associated primary schools moving into S1 in the associated secondary school. This is a better statistical projection as it contains degrees of uncertainty.

Please note the current average (i.e. a 5 year average) P7-S1 transfer rate for Hyndland Secondary is **114.8%** (*this seems counter intuitive as it's over 100% - it's just that the total transfer number of the four associated primaries + placing requests in/out is more than the total P7 in the catchment schools*) and the current average P7-S1 transfer rate for Knightswood Secondary is **79.7%** (*again, this just means that not all catchment school P7s go to Knightswood Secondary*).

Table 4 – Roll projections with Scotstoun Primary aligned to Hyndland Secondary. This table uses a 'moderated' P7-S1 transfer rate to avoid the double counting of pupils. This scenario already has P7 pupils from Scotstoun Primary transferring to Hyndland Secondary therefore, by using the current transfer rates as noted above for Table 3 we are actually 'double counting' the pupils in Scotstoun Primary who are moving to Hyndland Secondary.

To moderate the transfer rates, officers used the data provided in the P7-S1 analysis sheet for Scotstoun Primary pupils going to Hyndland Secondary and then used those numbers to moderate 'down' the transfer rate for Hyndland Secondary and moderate 'up' the transfer rate for Knightswood Secondary. The P7 – S1 transfer rates used in Table 4 are Hyndland Secondary at **103.7%** and Knightswood Secondary at **85.1%**

Appendix F - Hyndland Secondary – Placing Request Summary

Appendix G – Knightswood Secondary – Placing Request Summary

3. OPTIONS

3.1 Three options were considered; these were:

- I. Leave Hyndland entry criteria as is; that is, no change.
- II. Add part of the existing Scotstoun Primary School catchment area onto the Hyndland Secondary catchment area.
- III. Add all of the Scotstoun Primary School catchment area onto the Hyndland Secondary catchment area.

3.2 Option II impacts upon the capacity of Hyndland Secondary School, and if it were to happen, the geographically nearest area of Scotstoun Primary School catchment would be the area to transfer. Officers have had requests to review the catchment area from a small number of parents in an area known as 'The Avenues'. It would not make sense, nor be equitable, to transfer this area or a larger area, such as including both sides of Dumbarton Road, in isolation to the Hyndland Secondary School catchment area or to make it a shared area, i.e. families would have the right to send their children to Hyndland or Knightswood. This would result in Scotstoun Primary School being associated with two secondary schools. There would not be a strong educational argument for this. It could impact negatively on transition planning which would result in limited educational benefit.

3.3 Option III would mean that other families from other parts of the city would not be able to access Hyndland Secondary School and would impact upon the capacity of Hyndland Secondary School. The roll projections in the appendices show that over time there would be insufficient capacity at Hyndland Secondary School. It would also result in pupils living a few hundred metres from Knightswood Secondary school travelling to Hyndland Secondary School. There are not identifiable educational benefits in this option. This change would also be contrary to the council's policy of 'local schools for local children'.

3.4 Given the necessity to provide a strong educational benefit associated with any proposed changes, officers would recommend Option I with the caveat that officers should continue to monitor the numbers of pupils transitioning to secondary schools in the North West of the city. Educational benefits must always take precedence over personal choice, ease of access, and child care.

4 Policy and Resource Implications

Resource Implications:

Financial:

Within existing resources

Legal: As detailed in paper

Personnel: Within existing resources

Procurement: N/A

Council Strategic Plan: Excellent and Inclusive Education 35

Equality and Socio-Economic Impacts:

Does the proposal support the Council's Equality Outcomes 2021-25?. Please specify. Yes

What are the potential equality impacts as a result of this report? If changes were to be made an Equality Impact Assessment would be carried out as part of the process.

Please highlight if the policy/proposal will help address socio economic disadvantage. No

Climate Impacts:

Does the proposal support any Climate Plan actions? Please specify: No

What are the potential climate impacts as a result of this proposal? None

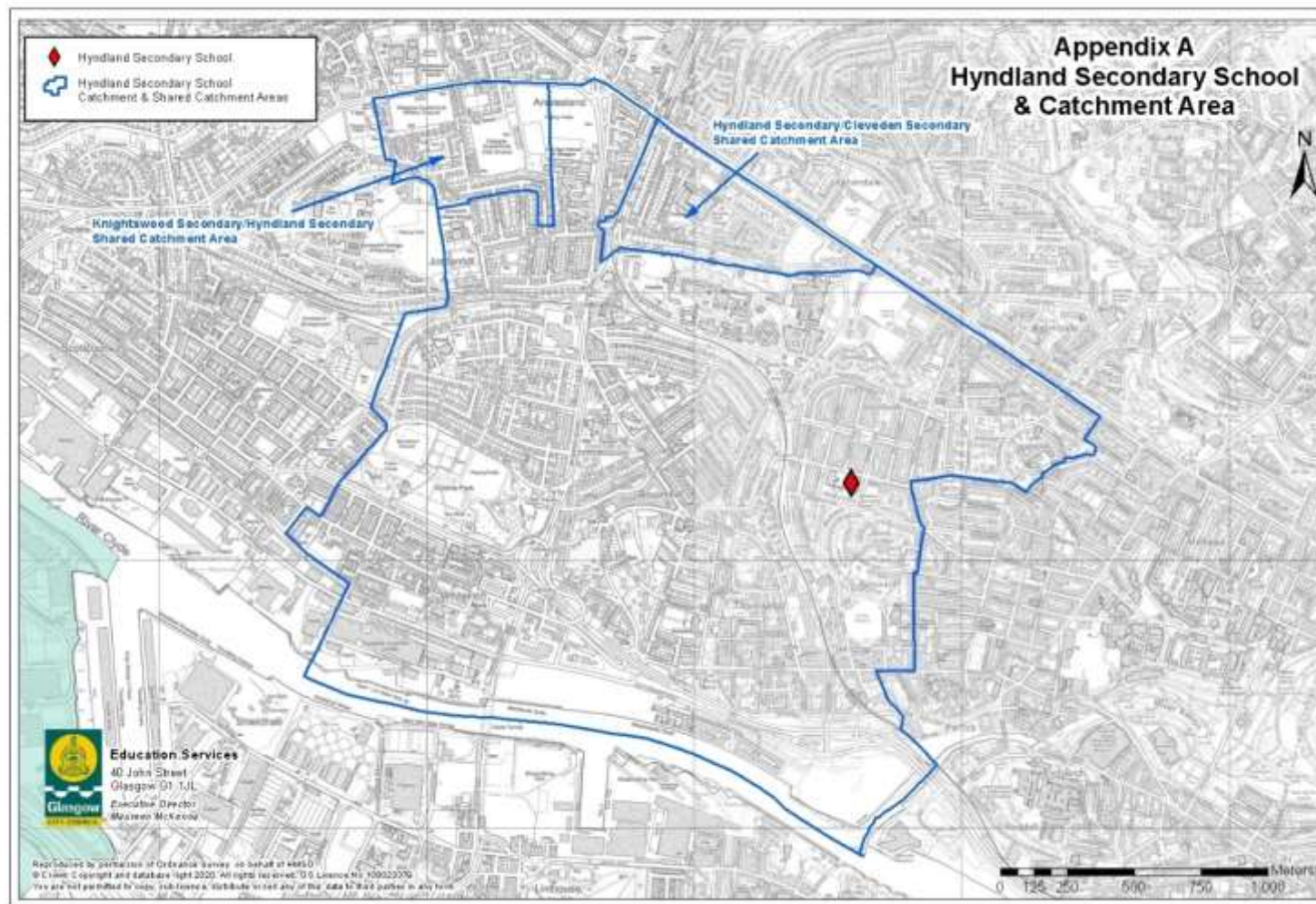
Will the proposal contribute to Glasgow's net zero carbon target? No

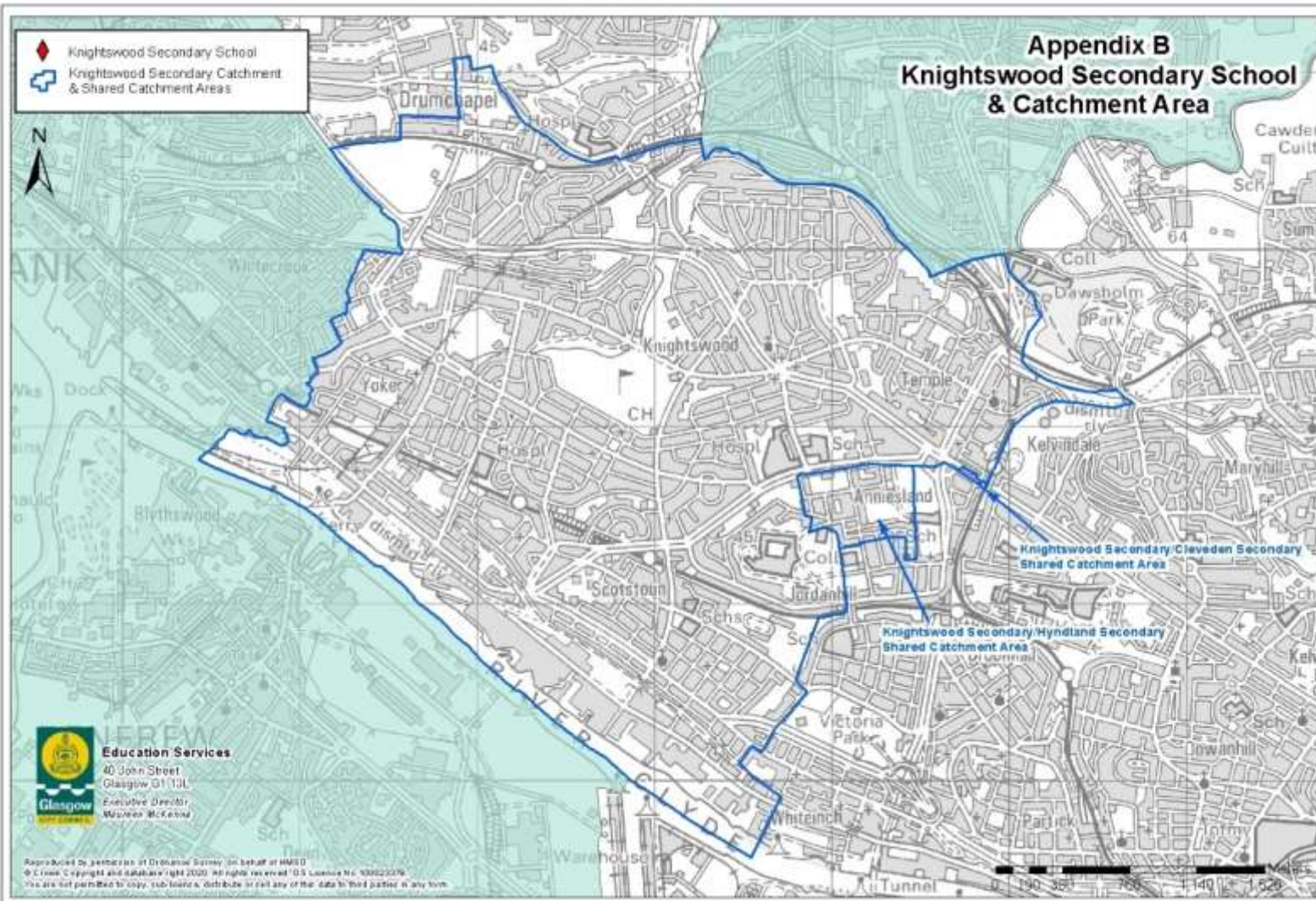
Privacy and Data Protection Impacts: None

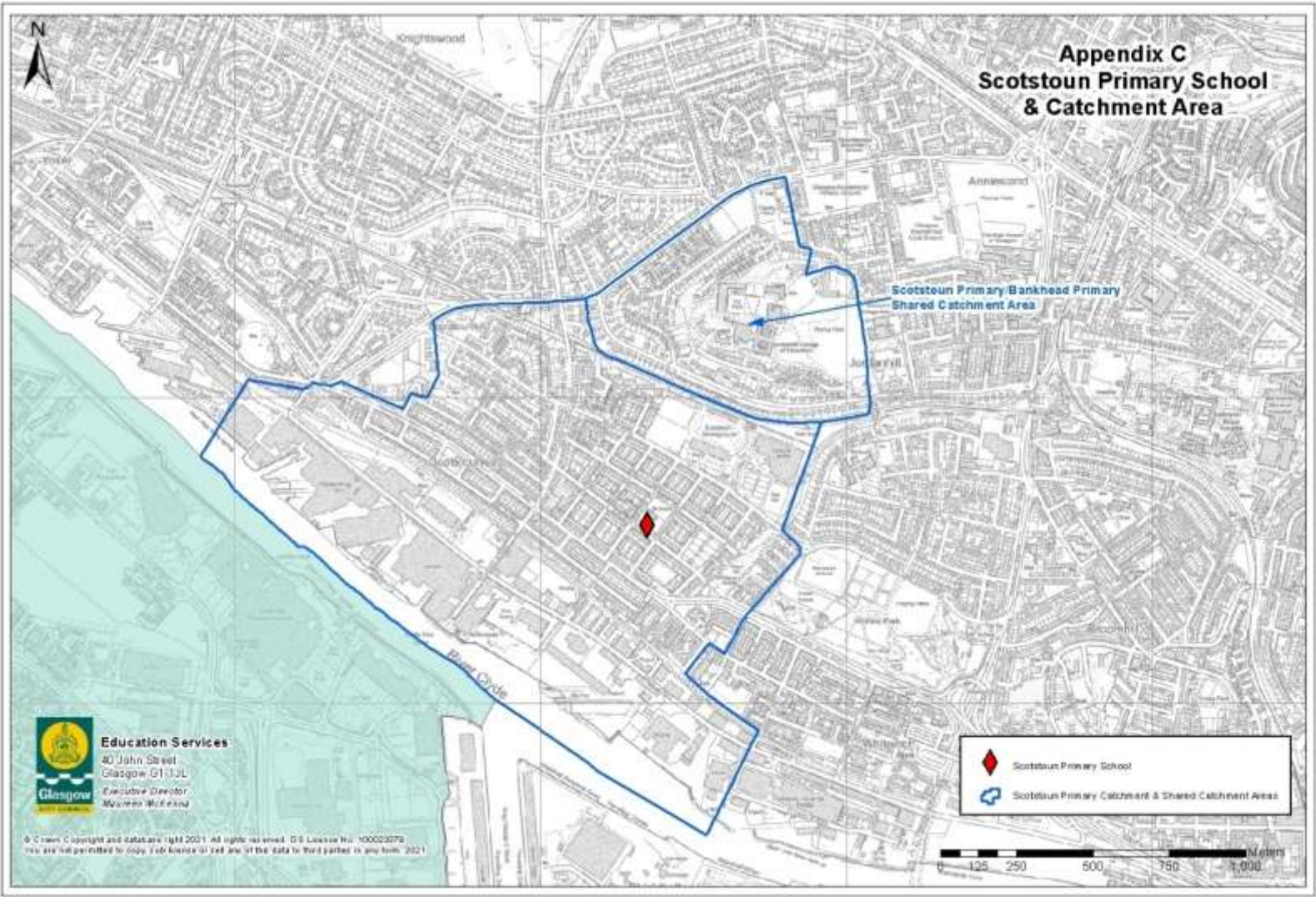
5 Recommendations

- 5.1 The Committee is asked to consider the content of this report and the implications of changing the current catchment areas.

The Ordnance Survey map data included within this document is provided to us under license from Ordnance Survey.









**Appendix C
Scotstoun Primary School
& Catchment Area**

Scotstoun Primary Bankhead Primary
Shared Catchment Area

Education Services
40 John Street
Glasgow G1 1JL
Executive Director
Maurice Wilson

-  Scotstoun Primary School
-  Scotstoun Primary Catchment & Shared Catchment Areas

© Crown Copyright and database right 2021. All rights reserved. OS Licence No. 100023079
You are not permitted to copy, re-broadcast or use any of the data to third parties in any form, 2021

0 125 250 500 750 1,000 **Meters**

Appendix D - Scotstoun Primary P7 to S1 Analysis

Analysis of Scotstoun Primary P7 Roll as at Census vs. Secondary School S1 Rolls as at Census

Source: School Census Data 2015 - 2020

	S1 Pupils - Census 2020		S1 Pupils - Census 2019		S1 Pupils - Census 2018		S1 Pupils - Census 2017		S1 Pupils - Census 2016	
Secondary School Name	Scotstoun Primary P7 Pupils - Census 2019	%	Scotstoun Primary P7 Pupils - Census 2018	%	Scotstoun Primary P7 Pupils - Census 2017	%	Scotstoun Primary P7 Pupils - Census 2016	%	Scotstoun Primary P7 Pupils - Census 2015	%
Cleveden Secondary School	0	0.0%	1	2.0%	0	0.0%	0	0.0%	1	1.7%
Hillhead Secondary School	0	0.0%	0	0.0%	0	0.0%	1	1.9%	0	0.0%
Hyndland Secondary School	9	16.4%	13	25.5%	17	29.3%	17	32.1%	28	47.5%
John Paul Academy	1	1.8%	0	0.0%	0	0.0%	0	0.0%	0	0.0%
Knightswood Secondary School	27	49.1%	17	33.3%	23	39.7%	14	26.4%	14	23.7%
Notre Dame High School	5	9.1%	1	2.0%	0	0.0%	0	0.0%	0	0.0%
St Thomas Aquinas Secondary School	3	5.5%	6	11.8%	2	3.4%	3	5.7%	6	10.2%
Non GCC Secondary School	10	18.2%	13	25.5%	16	27.6%	18	34.0%	10	16.9%
Total Scotstoun Primary P7 Roll (as at Census)	55	100.0%	51	100.0%	58	100.0%	53	100.0%	59	100.0%

Appendix E - Hyndland Secondary and Knightswood Secondary – 10 Year Roll Projections

Table 1 - Secondary School Roll Projections - 2020 Census base data - Master projections with current feeder primary schools (Scotstoun Primary associated with Knightswood Secondary)

Amber = Over 80% Capacity, Red = Over 100% Capacity. School capacity figures as at September 2020.

School Name	2020 Census Roll	2021	2022	2023	2024	2025	2026	2027	2028	2029	2030	Theoretical Maximum Capacity
Hyndland Secondary School	1027	1047	1046	1073	1084	1095	1096	1090	1095	1028	1039	950
Knightswood Secondary School	1237	1257	1264	1280	1278	1267	1268	1252	1257	1245	1229	1400

Table 2 - Secondary School Roll Projections- Projections with Scotstoun Primary School associated with Hyndland Secondary School

Note: Projections below show 100% of feeder primary projected P7 pupils moving to associated Secondary school (i.e. - no placing requests in or out granted)

School Name	2020 Census Roll	2021	2022	2023	2024	2025	2026	2027	2028	2029	2030	Theoretical Maximum Capacity
Hyndland Secondary School	1027	1096	1129	1149	1190	1288	1308	1293	1295	1208	1178	950
Knightswood Secondary School	1237	1259	1275	1297	1286	1277	1291	1290	1303	1308	1300	1400

Table 3 - Secondary School Roll Projections- Projections with Scotstoun Primary School associated with Hyndland Secondary School

Note: Projections below use current P7 - S1 transfer rates for both schools to project S1 numbers each year (i.e. current average placing requests rates applied)

School Name	2020 Census Roll	2021	2022	2023	2024	2025	2026	2027	2028	2029	2030	Theoretical Maximum Capacity
Hyndland Secondary School	1027	1132	1190	1208	1261	1308	1309	1300	1327	1272	1229	950
Knightswood Secondary School	1237	1211	1181	1147	1099	1050	1034	1034	1045	1049	1042	1400

Table 4 - Secondary School Roll Projections- Projections with Scotstoun Primary School associated with Hyndland Secondary School

Note: Projections below use a moderated P7 - S1 transfer rate for both school to project S1 numbers each year (moderated transfer rate based on recent trends in P7 to S1 transfers from Scotstoun Primary)

School Name	2020 Census Roll	2021	2022	2023	2024	2025	2026	2027	2028	2029	2030	Theoretical Maximum Capacity
Hyndland Secondary School	1027	1109	1147	1178	1199	1268	1264	1219	1231	1268	1238	950
Knightswood Secondary School	1237	1224	1204	1180	1142	1101	1091	1089	1100	1104	1097	1400

The capacity figure noted above represents the optimal capacities of our secondary school estate. The capacities within our secondary schools will fluctuate from year to year, and indeed at regular intervals throughout the academic year, depending upon the exact numbers of young people at each stage within any given secondary school.

Appendix F - Hyndland Secondary School – Placing Request Summary

Session	School Application From	Number Granted	Number Refused	Total Applications	Sept Census S1 Roll	% PRS granted
2015/2016	Bankhead Primary School	0	1	1		
2015/2016	Blairdardie Primary School	0	1	1		
2015/2016	Broomhill Primary School	6	14	20		
2015/2016	Chirnsyde Primary School	1	0	1		
2015/2016	Corpus Christi Primary School	0	1	1		
2015/2016	Craigton Primary School	1	0	1		
2015/2016	Hillhead Primary School	0	3	3		
2015/2016	Hyndland Primary School	21	2	23		
2015/2016	Kelvindale Primary School	14	3	17		
2015/2016	Knightswood Primary School	0	2	2		
2015/2016	Notre Dame Primary School	15	6	21		
2015/2016	Scotstoun Primary School	25	7	32		
2015/2016	St Brendan's Primary School	2	0	2		
2015/2016	St Charles' Primary School	0	1	1		
2015/2016	St Joseph's Primary School	1	1	2		
2015/2016	St Patrick's Primary School	1	2	3		
2015/2016	St Paul's (Whiteinch) Primary	1	0	1		
2015/2016	Thornwood Primary School	2	2	4		
2015/2016	Whiteinch Primary School	5	2	7		
	Total Number of Allocations	95	48	143	180	53%

Session	School Application From	Number Granted	Number Refused	Total Applications	Sept Census S1 Roll	% PRS granted
2016/2017	Bankhead Primary School	1	0	1		
2016/2017	Blairdardie Primary School	0	1	1		
2016/2017	Broomhill Primary School	5	2	7		
2016/2017	Chirnsyde Primary School	1	0	1		
2016/2017	Craigton Primary School	0	1	1		
2016/2017	Dunard Primary School	1	0	1		
2016/2017	Garnetbank Primary School	3	1	4		
2016/2017	Hillhead Primary School	4	3	7		
2016/2017	Hillington Primary School	0	1	1		
2016/2017	Hyndland Primary School	17	2	19		
2016/2017	Ibrox Primary School	0	1	1		
2016/2017	Kelvindale Primary School	19	3	22		
2016/2017	Knightswood Primary School	4	1	5		
2016/2017	Lorne Street Primary School	0	1	1		
2016/2017	Notre Dame Primary School	11	0	11		
2016/2017	Pirie Park Primary School	1	0	1		
2016/2017	Scotstoun Primary School	13	3	16		
2016/2017	St Charles' Primary School	0	1	1		
2016/2017	St Fillan's Primary School	1	1	2		
2016/2017	St Mary's Primary School	0	2	2		
2016/2017	St Mungo's Primary School	1	2	3		
2016/2017	St Ninian's Primary School	1	0	1		
2016/2017	St Patrick's Primary School	1	0	1		
2016/2017	St Paul's (Whiteinch) Primary	0	1	1		
2016/2017	Thornwood Primary School	3	0	3		
2016/2017	Whiteinch Primary School	5	0	5		
2016/2017	Yoker Primary School	0	1	1		
2016/2017	Unknown Primary School	3	1	4		
	Total Number of Allocations	95	29	124	179	53%

Appendix F (cont.) - Hyndland Secondary School – Placing Request Summary

Session	School Application From	Number Granted	Number Refused	Total Applications	Sept Census S1 Roll	% PRS granted
2017/2018	Anderston Primary School	1	0	1		
2017/2018	Bankhead Primary School	0	6	6		
2017/2018	Battlefield Primary School	0	1	1		
2017/2018	Bearsden Primary School	0	1	1		
2017/2018	Blackfriars Primary School	0	1	1		
2017/2018	Broomhill Primary School	3	3	6		
2017/2018	Caldercuilt Primary School	0	1	1		
2017/2018	Camstradden Primary School	0	1	1		
2017/2018	Darnley Primary School	0	1	1		
2017/2018	Dunard Primary School	1	4	5		
2017/2018	Garnetbank Primary School	0	1	1		
2017/2018	Golfhill Primary School	0	1	1		
2017/2018	Hyndland Primary School	21	4	25		
2017/2018	Kelvindale Primary School	23	6	29		
2017/2018	Knightswood Primary School	0	5	5		
2017/2018	Lorne Street Primary School	0	1	1		
2017/2018	Notre Dame Primary School	9	2	11		
2017/2018	Oakgrove Primary School	0	1	1		
2017/2018	Parkview Primary School	0	1	1		
2017/2018	Pirie Park Primary School	0	1	1		
2017/2018	Sacred Heart Primary School	0	1	1		
2017/2018	Scotstoun Primary School	14	18	32		
2017/2018	St Andrew's (bearsden)	0	1	1		
2017/2018	St Angela's Primary School	0	2	2		
2017/2018	St Bernard's Primary School	1	0	1		
2017/2018	St Charles' Primary School	0	1	1		
2017/2018	St Francis' Primary School	0	1	1		
2017/2018	St Joseph's Primary School	1	2	3		
2017/2018	St Michael's Primary School	0	1	1		
2017/2018	St Mungo's Primary School	0	1	1		
2017/2018	St Patrick's Primary School	0	2	2		
2017/2018	St Paul's (Whiteinch) Primary	0	1	1		
2017/2018	Thornwood Primary School	2	1	3		
2017/2018	Whiteinch Primary School	1	1	2		
	Total Number of Allocations	77	75	152	177	44%

Appendix F (cont.) - Hyndland Secondary School – Placing Request Summary

Session	School Application From	Number Granted	Number Refused	Total Applications	Sept Census S1 Roll	% PRS granted
2018/2019	Anderston Primary School	0	1	1		
2018/2019	Alexandra Parade Primary School	0	1	1		
2018/2019	Baldernock Primary School	0	2	2		
2018/2019	Bankhead Primary School	0	1	1		
2018/2019	Battlefield Primary School	0	1	1		
2018/2019	Blackfriars Primary School	0	1	1		
2018/2019	Broomhill Primary School	3	5	8		
2018/2019	Caldercuil Primary School	0	1	1		
2018/2019	Dunard Primary School	0	2	2		
2018/2019	Glendale Primary School	0	1	1		
2018/2019	Hillhead Primary School	3	3	6		
2018/2019	Hyndland Primary School	12	2	14		
2018/2019	Kelvindale Primary School	24	10	34		
2018/2019	Killermont Primary School	0	1	1		
2018/2019	Knightswood Primary School	0	4	4		
2018/2019	Notre Dame Primary School	16	3	19		
2018/2019	Oakgrove Primary School	1	2	3		
2018/2019	Parkview Primary School	0	1	1		
2018/2019	Riverside Primary School	0	2	2		
2018/2019	Saracen Primary School	0	2	2		
2018/2019	Scotstoun Primary School	10	14	24		
2018/2019	South Park Primary School	0	1	1		
2018/2019	St Albert's Primary School	0	1	1		
2018/2019	St Blane's Primary School	0	1	1		
2018/2019	St Catherine's Primary School	0	1	1		
2018/2019	St Francis' Primary School	0	2	2		
2018/2019	St Mark's Primary School	0	1	1		
2018/2019	St Patrick's Primary School	1	1	2		
2018/2019	St Roch's Primary School	2	1	3		
2018/2019	St Teresa's Primary School	0	1	1		
2018/2019	St Thomas' Primary School	0	2	2		
2018/2019	Thornwood Primary School	5	3	8		
2018/2019	Tinto Primary School	0	1	1		
2018/2019	Whiteinch Primary School	0	3	3		
	Total Number of Allocations	77	79	156	180	43%

Appendix F (cont.) - Hyndland Secondary School – Placing Request Summary

Session	School Application From	Number Granted	Number Refused	Total Applications	Sept Census S1 Roll	% PRS granted
2019/2020	Anderston Primary School	1	0	1		
2019/2020	Antonine Primary School	0	1	1		
2019/2020	Bankhead Primary School	1	5	6		
2019/2020	Blairdardie Primary School	0	1	1		
2019/2020	Broomhill Primary School	6	7	13		
2019/2020	Caldercuilt Primary School	0	1	1		
2019/2020	Chirnsyde Primary School	0	1	1		
2019/2020	Clyde Primary School	0	1	1		
2019/2020	Croftfoot Primary School	0	1	1		
2019/2020	Garnetbank Primary School	3	7	10		
2019/2020	Greenhill Primary School	0	1	1		
2019/2020	Hillhead Primary School	1	2	3		
2019/2020	Holy Cross Primary School	0	1	1		
2019/2020	Hyndland Primary School	13	3	16		
2019/2020	Kelvindale Primary School	23	7	30		
2019/2020	Knightswood Primary School	1	6	7		
2019/2020	Lorne Street Primary School	0	4	4		
2019/2020	Notre Dame Primary School	11	1	12		
2019/2020	Parkview Primary School	0	3	3		
2019/2020	Riverside Primary School	0	1	1		
2019/2020	Scotstoun Primary School	7	7	14		
2019/2020	St Albert's Primary School	0	1	1		
2019/2020	St Charles' Primary School	0	2	2		
2019/2020	St Francis' Primary School	0	2	2		
2019/2020	St Joseph's Primary School	0	1	1		
2019/2020	St Mary's Primary School	0	1	1		
2019/2020	St Monica's (Milton) Primary School	0	1	1		
2019/2020	St Mungo's Primary School	0	1	1		
2019/2020	St Ninian's Primary School	0	1	1		
2019/2020	Thomas Muir Primary School	0	1	1		
2019/2020	Thornwood Primary School	0	3	3		
2019/2020	Wallacewell Primary School	0	3	3		
2019/2020	Unknown Primary School	0	16	16		
2019/2020	Whiteinch Primary School	0	2	2		
	Total Number of Allocations	67	96	163	180	37%

Appendix G – Knightswood Secondary School – Placing Request Summary

Session	School Application From	Number Granted	Number Refused	Total applications	Sept Census S1 Roll	% PRS granted
2015/2016	Blairdardie Primary School	15	0	15		
2015/2016	Corpus Christi Primary School	2	0	2		
2015/2016	Knightswood Primary School	5	0	5		
2015/2016	Scotstoun Primary School	1	0	1		
2015/2016	St Francis' Primary School	1	0	1		
2015/2016	Unknown Primary	1	0	1		
Total		25	0	25	213	12%

Session	School Application From	Number Granted	Number Refused	Total applications	Sept Census S1 Roll	% PRS granted
2016/2017	Bankhead Primary School	6	0	6		
2016/2017	Blairdardie Primary School	11	2	13		
2016/2017	Corpus Christi Primary School	3	0	3		
2016/2017	Garscadden Primary School	3	0	3		
2016/2017	Kelvindale Primary School	0	2	2		
2016/2017	Knightswood Primary School	1	1	2		
2016/2017	Scotstoun Primary School	1	1	2		
2016/2017	St Brendan's Primary School	2	0	2		
2016/2017	St Clare's Primary School	1	0	1		
2016/2017	St Ninian's Primary School	1	0	1		
2016/2017	Thornwood Primary School	0	1	1		
Total		29	7	36	193	15%

Appendix G (cont.) – Knightswood Secondary School – Placing Request Summary

<u>Session</u>	<u>School Application From</u>	<u>Number Granted</u>	<u>Number Refused</u>	<u>Total applications</u>	<u>Sept Census S1 Roll</u>	<u>% PRS granted</u>
2017/2018	Bankhead Primary School	1	2	3		
2017/2018	Blairdardie Primary School	8	6	14		
2017/2018	Camstradden Primary School	1	0	1		
2017/2018	Clyde Primary School	0	1	1		
2017/2018	Corpus Christi Primary School	0	2	2		
2017/2018	Dunard Primary School	0	1	1		
2017/2018	Knightswood Primary School	5	1	6		
2017/2018	Notre Dame Primary School	0	1	1		
2017/2018	Scotstoun Primary School	2	0	2		
2017/2018	St Brendan's Primary School	0	4	4		
2017/2018	St Ninian's Primary School	0	1	1		
2017/2018	St Paul's (Whiteinch) Primary School	1	1	2		
2017/2018	Whiteinch Primary School	0	1	1		
2017/2018	Unknown Primary	0	1	1		
Total		18	22	40	204	9%

<u>Session</u>	<u>School Application From</u>	<u>Number Granted</u>	<u>Number Refused</u>	<u>Total applications</u>	<u>Sept Census S1 Roll</u>	<u>% PRS granted</u>
2018/2019	Antonine Primary School	0	2	2		
2018/2019	Bankhead Primary School	2	0	2		
2018/2019	Blairdardie Primary School	6	3	9		
2018/2019	Caldercuilt Primary School	1	0	1		
2018/2019	Clyde Primary School	2	0	2		
2018/2019	Knightswood Primary School	1	1	2		
2018/2019	Parkview Primary School	1	0	1		
2018/2019	Outwith GCC	1	0	1		
2018/2019	Unknown Primary	1	0	1		
Total		15	6	21	246	6%