



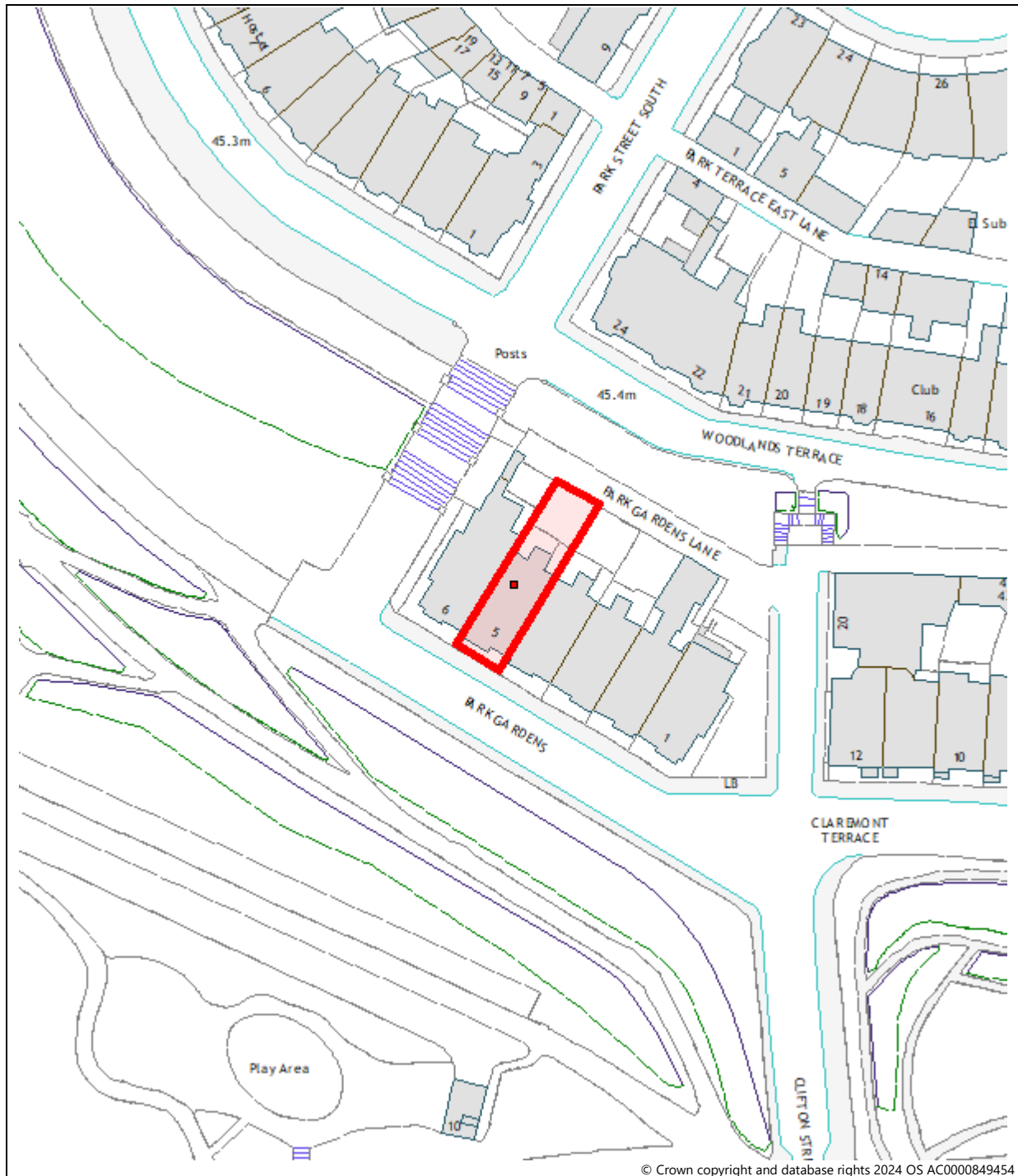
Neighbourhoods, Regeneration
and Sustainability
Glasgow City Council
Exchange House
231 George Street
Glasgow G1 1RX
Head of Planning: Sarah Shaw

Reference No: 24/02963/FUL

Address: Flat 1/1, 5 Park Gardens, Glasgow G3 7YE

Ward: 11, Hillhead

Indicative Site Location



Location of Site (for details refer to report)