



# NIIF Funding Proposals

Bridgeton + Dalmarnock Community Council

24.07.2025

This document contains proposals for how the Neighbourhood Infrastructure Improvement Fund (NIIF) can be spent in the Calton Ward and specifically the Bridgeton and Dalmarnock area. These ideas were prepared by members of Bridgeton and Dalmarnock Community Council (BDCC) following a consultation with local residents held on the 2nd of July 2025. The consultation was held in response to a call for further ideas from the Council's Neighbourhood Liaison Co-ordinator for the Calton Ward.

## CONTENTS

IDEA 01: Signage

IDEA 02: Community Orchard and Mural

IDEA 03: Rainwater Management

IDEA 04: Rewilding

IDEA 05: Bridgeton Cross & Main Street Furnishings

IDEA 06: Murals

# IDEA 01

## SIGNAGE

### Description of work required for Estimate

Weather resistant banners for outdoor use to be mounted to light poles

Made of superior PVC flex material, resistant to tearing, moisture, and UV damage including wind flaps and lamination

To be printed double sided using high resolution printing

To include top and bottom pole pockets

Estimate to include for poles and mount

Banner design to be coordinated with Bridgeton and Dalmarnock Community Council

Brief for Banner design:

- Sign text to welcome people to Bridgeton and Dalmarnock / create a slogan for the area
- Sign graphics to represent the history of the areas including prominent landmarks (for example Bridgeton cross or Dalmarnock Train Station)
- To include vibrant colours
- Refer to similar installation in Shawlands (pictures included below for reference)

Size: c. 600 x 1200mm (final size dependant on design)

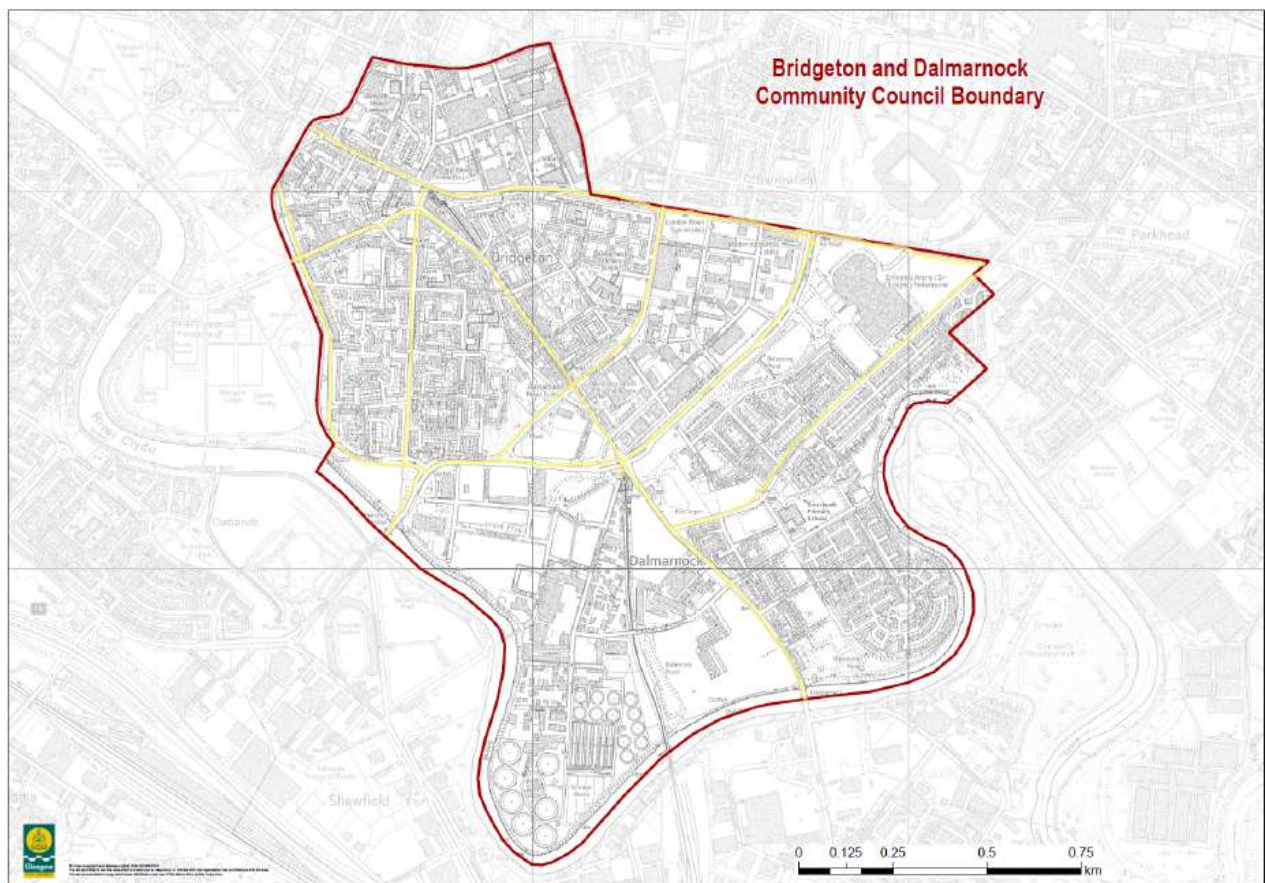
Number: 50 minimum



## Location of Work required for Estimate

To be installed on alternating light poles on key streets in both localities (see highlighted areas in yellow) including:

- Dalmarnock Road
- Main Street
- London Road
- Springfield Road
- Dunn Street
- Clyde Gateway
- The Green Rd



# IDEA 02

## COMMUNITY ORCHARD

### Description of work required for Estimate

Converting the area on Birkwood Street highlighted below into a community orchard / growing area, combined with the creation of a mural on the adjacent blank gable wall celebrating local history and identity.

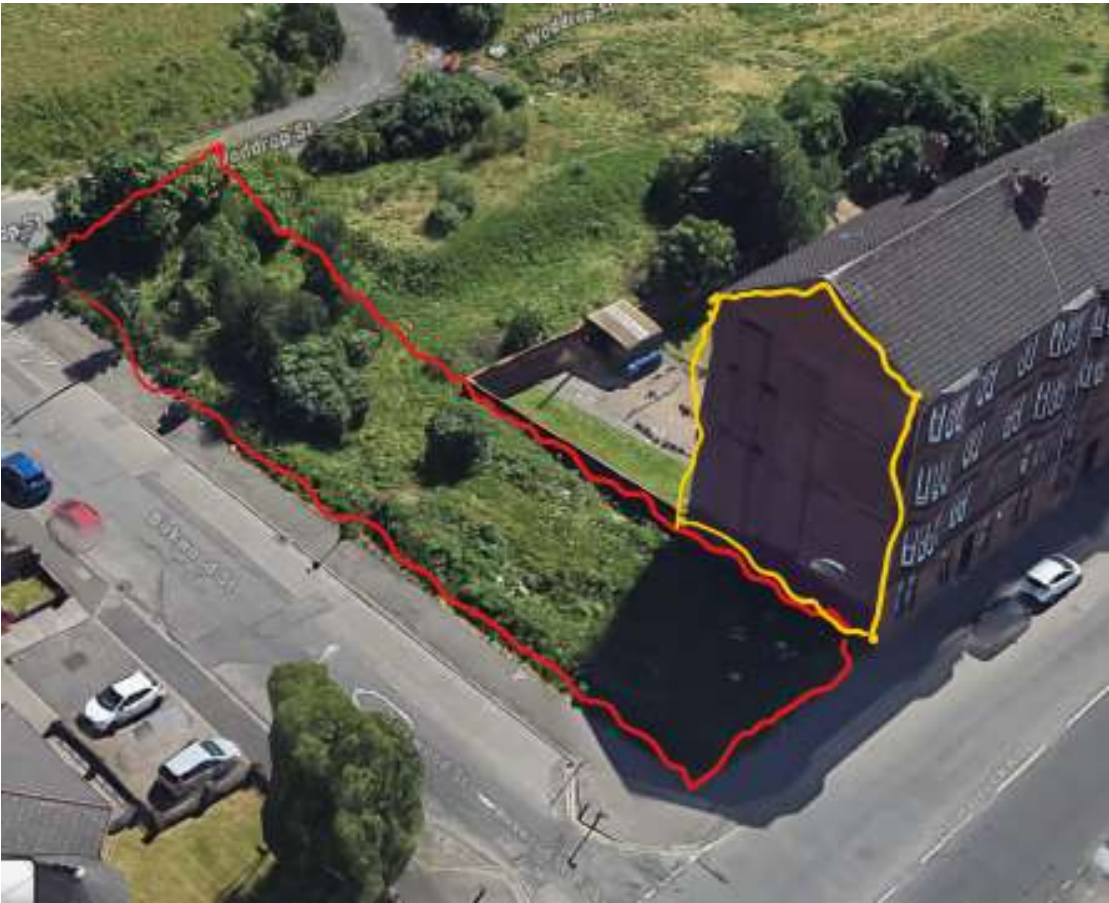
Works to include:

- Site Preparation - clear and clean the site, removing rubbish and overgrowth. Prepare soil for planting, including testing, conditioning, and levelling as needed.
- Installation of Infrastructure - including perimeter fence & pathways Orchard Creation - Plant a diverse orchard with fruit and nut trees, herbs,
- and pollinator-friendly plants. Include allowance for seating and a space for a small community gathering. Include for signage to educate visitors on the trees and sustainable growing.
- Heritage Mural - Commission a mural on a blank gable wall overlooking the site. Work with the community to reflect local history, culture, and shared values in the design.

### Location of Work required for Estimate

Area of land on Birkwood street between Dalmarnock Road and Woddrop Street - Highlighted in red below. Area for mural highlighted in yellow





# IDEA 03

## RAINWATER MANAGEMENT

### Description of works required for estimate

Retrofit SuDS into public realm areas and look to manage rainwater through large public building roofs such as schools and the Glasgow Women's Library via raingarden planters.

Modular raingarden planters are available from suppliers including GreenBlue Urban, SuDSPlanter and Meristem Design for example.

Raingarden planters would enhance climate and flood resilience while also providing amenity and biodiversity benefits for residents and the environment. There is the potential to tie in with environmental school curriculum and public education.





### Location of works required for estimate

To be installed on accessible downpipes or in front of building entrances draining large roofs on public buildings in the BDCC area, for example:

- Riverbank Primary School
- Glasgow Club Emirates Arena
- Glasgow Club Crownpoint – likely accessible downpipe(s)
- Legacy Hub
- Bridgeton Community Learning Campus
- Gateway Church – accessible downpipe(s)
- Sacred Heart Catholic Church – accessible downpipe(s)
- St Mary's RC Church – accessible downpipe(s)
- St Mungo's Academy, Glasgow – accessible downpipe(s)
- Glasgow Women's Library – accessible downpipe(s)

# IDEA 04

## REWILDING

### Description of works required for estimate

The proposal is for the introduction of more greenery including wild flowers, snow drops and other flowers as well as new trees across Bridgeton and Dalmarnock as shown in the following images.

### Location of works required for estimate

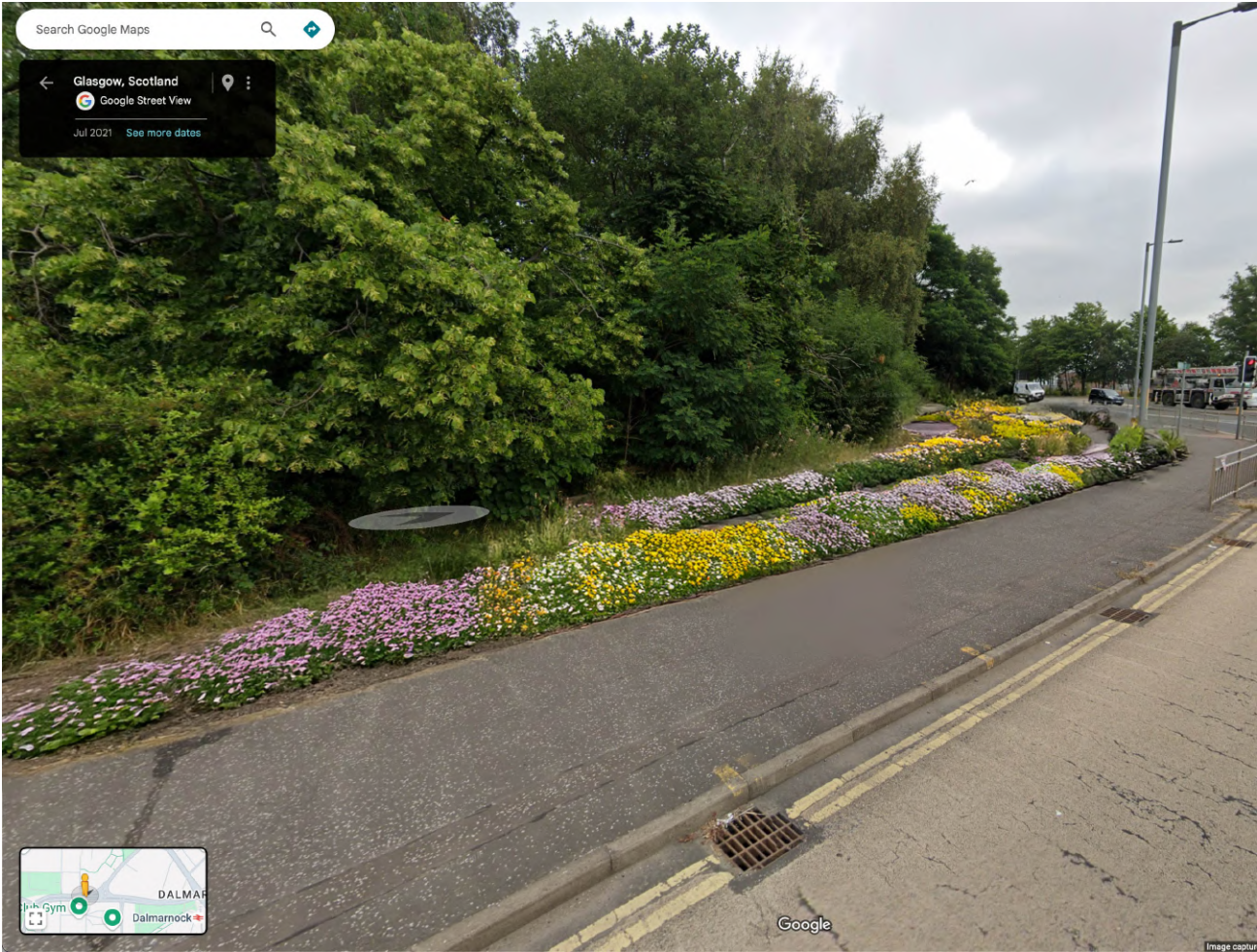
Please refer to map locations in the following images.



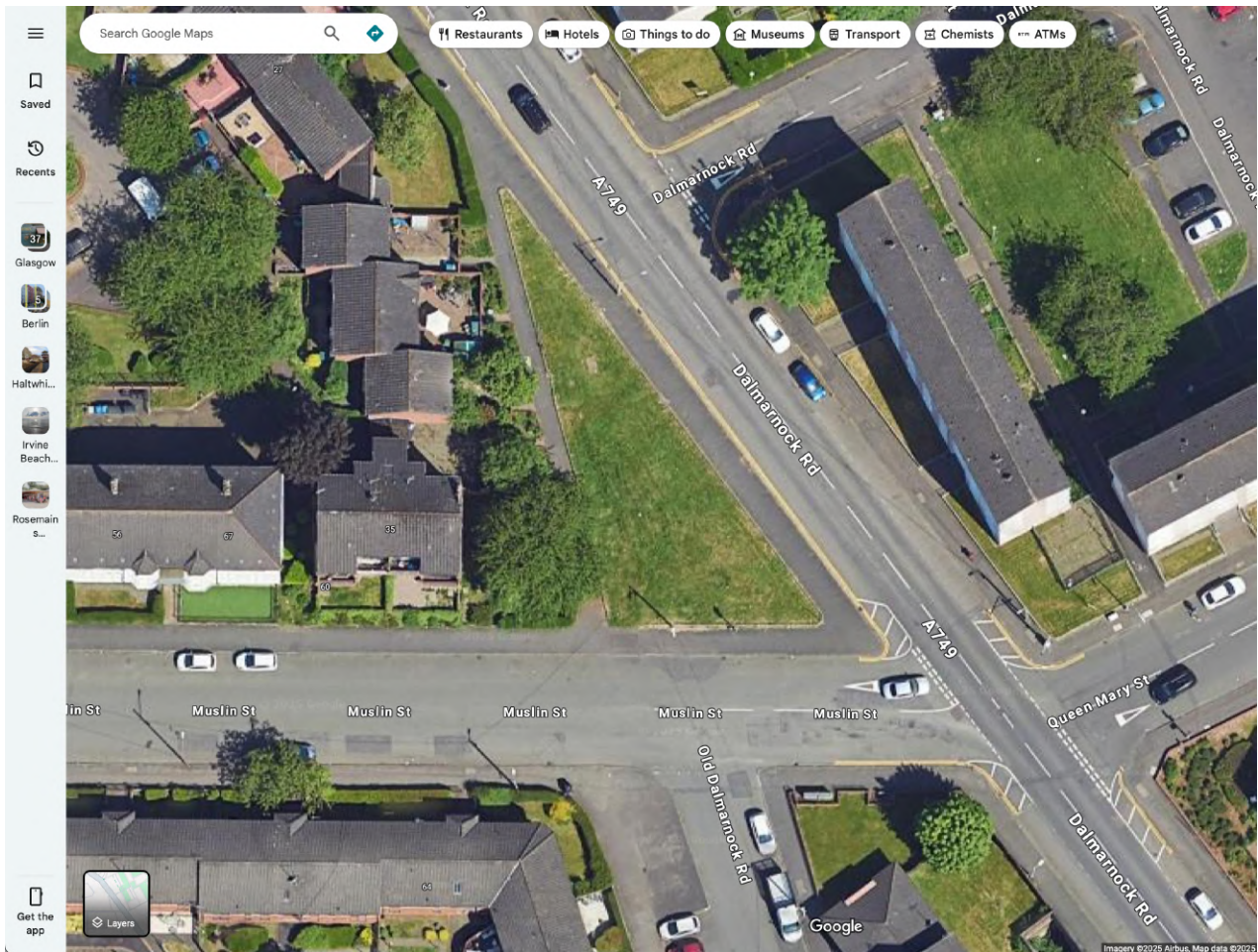














# IDEA 05

## BRIDGETON CROSS & MAIN STREET FURNISHINGS

### Description & Location of works required for estimate

This proposal for NIIF funding is a request for furnishings around Bridgeton Cross and potentially surrounding areas. BDCC appreciates the excellent work carried out to restore the Umbrella, but notes that the area around it, or the cross as a whole, is rather grey and dull.

This request includes planters, hanging baskets, new benches, some lighting and a community notice board. Please cost the ideas individually by section and by individual unit price. The request comes in two parts. Please prioritise part 1 and take part 2 into consideration.



## Section 1 Bridgeton Cross

1. Community Notice Board - this is essential to keep the community updated with events in the area, including those of the CC. Ideally, it will be a large one, with enough space for all community notices. BDCC will happily take responsibility for placing signs within the noticeboard, communicating with and helping to facilitate local campaigns to spread their information.



2. Planters - BDCC notes the existence of 6 planters already at the Cross. However, the contents of these planters are rather sparse, containing what amounts to shrubbery and offering very little that's aesthetically pleasing. Thus, we propose replacing the contents of the 6 existing planters with some more colourful flowers, along with 6 more planters - these would be placed more strategically in a circle around the cross, surrounding the area in colour, rather than just being in a row like now. See the first image below for current planters and the second for an example of something more colourful





We would also request planters in two other places. (1) In the ample space outside the Credit Union (CU), crossing James Street from Bridgeton Cross. This patch of ground has a lot of potential for furnishings and decoration. (2) Between the new iCafe and the Library - a planter here would sit at the head/end of ORR street and create a connection between both the cafe and the library.



3. Benches - BDCC notes 11 existing stone benches. These are rather unsightly and offer no back support, making them rather uncomfortable. Ideally, all of these benches will be replaced with more functional benches that offer back support. BDCC notes objections to wooden benches as being a fire hazard. Thus, we suggest new design metal benches in a variety of colours, see the example below. Ideally, the benches will be replaced 1 for 1; however, we note that the metal benches are larger and may require some readjustments to the final number.



We also request a bench placed in the area outside the Credit Union, mentioned above. And request 2 benches, 1 placed on either side of the requested planter in the area between the Library and the new iCafe.

4. Hanging Baskets/Designer Lamp Posts - BDCC notes the 4 strange metal poles at Bridgeton Cross (with another one at the credit union). These serve no aesthetic purpose and look rather dilapidated. Ideally, these will be removed and replaced with designer lamp posts, coupled with some hanging baskets. Optional hanging baskets may be placed around the Umbrella itself. We also request a designer lamppost at both the space outside the CU and the space at Orr Street.



5. Lighting - on or perhaps between the trees, either on trunks or within leaves. There are 2 sets of 3 trees at the cross. The 1st image below shows previous lighting that no longer functions, presumably from Christmas. The lights requested should be solar-powered fairy lights.





We additionally request the same setup on the 3 trees outside the CU.

Total Units:

- Notice Board x 1
- Planters x8 (6 for the cross, 1 for the top of Orr Street and 1 for outside the Credit Union at the junction of Main Street and James Street).
- Benches x 14 (11 if we are to replace 1 for 1 at Bridgeton Cross, and 2 for the top of Orr Street and 1 for outside Credit Union).
- Hanging Baskets x4? (Dependent on whether those strange poles remain or are removed. They could be replaced with fancy street lights. Please provide a price on 1 basket, regardless, for future reference).
- Designer Lamp posts x 6 (To replace the poles)
- Solar Fairy Lighting x 9 (to cover 9 trees)

## Section 2 - Main Street (Further considerations)

\*\*\*Please see these suggestions as separate from section 1.

Bridgeton Cross is the heart of the community, and it makes sense to focus our decorative plans there. Yet, it should be considered that Bridgeton itself is a central location and that the streets leading off of the cross should also be much more aesthetically pleasing, specifically Main Street.

To this end, we offer some additional ideas to make the area more attractive. These requests are separate from the main requests at Bridgeton Cross, but should be actively considered to improve the aesthetics of the area.

To do this, we will split Main Street up into two sections. Section 1 from Bridgeton Cross to the bend at the junction of Mackeith Street and Section 2 from Mackeith Street to Newhall Street.

Section 1 is part of the main commercial area of Bridgeton. It is often the first part of Bridgeton people see when coming from Glasgow Green along James Street, certainly in cars. The beginning of the section at Mackieth Street contains a metal barrier facing the health centre. This barrier could be improved with some hanging baskets placed along it to give a nice welcome to the commercial area.





Furthermore, there is a lack of street lighting in this section. As such, we also propose the introduction of designer street lights along this section, again with hanging baskets. 3 on each might be a suitable number here. Some additional planters in a couple of the spaces between the black poles on the side of the health centre would also be an improvement.



Section 2 would be a similar idea. There are currently around 26 street lamps with lamp posts from Newhall Street to Mackeith Street. Replacing these with designer street lamps, coupled with hanging baskets, would be our first choice. This would boost the aesthetics of the entire street. Failing new street lamps, we would request hanging baskets for the existing lampposts. A number of planters here would also be a strong addition. These could be placed within specific distances of each other along the street.

A “Welcome to Bridgeton” sign arching across the street at the Newhall Street end would be another massive improvement and something that could be seen from Clyde Gateway Road, as you come across Shawfield Bridge.



We are being more vague about numbers here, as this is a secondary part of the request. We would be happy to flesh out these ideas further.

To help with the second part of this request, we ask for pricing on planters, hanging baskets and designer lampposts as individual units. This would be most useful for ongoing planning.

# IDEA 06

## MURALS

### Description of Required for Estimate

As part of our ongoing commitment to community pride, regeneration and cultural expression, Bridgeton and Dalmarlock Community Council is seeking NIIF Funding to commission a large-scale public mural in the heart of Bridgeton. The mural will be a vibrant celebration of the area's rich heritage, resilience, and future aspirations.

### Brief for Mural Design

The mural should be put out for consultation to find an appropriate artist. Possible ideas could include;

1. Industrial and Working-Class Heritage
  - Depict scenes from the areas shipbuilding, engineering, and textile past.
  - Workers leaving the factories, steam trains, or tramcars.
  - Women munitions workers during WWII.
2. Historic Landmarks
  - Bridgeton Cross and the Umbrella
  - The Olympia Theatre/Library
  - The old railway arches and red sandstone buildings
3. Nature in the City
  - Glasgow Green – trees, the People's Palace, the Winter Gardens
  - Wildlife that appears in the area – foxes, birds, squirrels
  - Floral borders using thistles or wildflowers found locally
4. The People of Bridgeton and Dalmarlock
  - Portraits of real or stylised residents from different eras; shopkeepers, young people, elders
  - Faces of community today.

## Location of works required for estimate

Above Bridgeton Train Station



Where London Road meets Abercrombie Street (on the side of Sinclair's Cakes).

At Birkwood Street - Refer to Idea 02