



**APPLICATION TO DAP FOR NIIF FUNDS  
FOR CONSOLIDATION  
OF THE MONTEATH  
MAUSOLEUM  
IN THE GLASGOW NECROPOLIS**





## **THE MONTEATH MAUSOLEUM**

**This is the iconic large circular mausoleum on the southwest corner of the Glasgow Necropolis visible from many parts of Glasgow and the largest of the memorials in need of restoration. The loss of this magnificent monument would be devastating to Glasgow's skyline and to the Glasgow Necropolis. It is deteriorating very fast being located at the south west corner of the cemetery in the direct line of the prevailing winds and sandstone being decimated by acid rain during the 19c Industrialisation of the city.**

### **FOR CONTEXT AND BACKGROUND INFORMATION**

**This mausoleum was built for Major Archibald Douglas Monteath, who served in the East India Company before returning to Glasgow. He was interred here in 1842 and his brother, James Monteath Douglas was interred here in 1850.**

**The mausoleum was designed by architect David Cousin, who formed a brief partnership with Civil Engineer, William Gale and worked with him on this monument. It is an unusual building, being of neo-Norman design in this cemetery of predominantly classical monuments.**

**Intriguingly it has no writing, lettering or numerals inscribed anywhere on it. It is a circular temple building 30 ft in diameter, the design of which was based on the Knights Templar Church of the Holy Sepulchre. The main lower portion of the building is split into sixteen facets around its circumference with one double-bay-wide entrance porch and fourteen deep, round-arched window niches at low level, each one elaborately carved in a different design. The entrance porch is also elaborately carved with a round arch over the door including carved grotesque faces and a pitched stone roof above.**

**The monument is a monolithic masonry building, constructed of Giffnock sandstone. As sandstone is porous by nature, the building has tendency to absorb moisture into its fabric. Black crust formation is observed in both the interior and exterior. Extensive areas of decorative moulding are losing their surface which indicates accelerated erosion has been taking place at the building.**

**The Friends of Glasgow Necropolis (FoGN), a Scottish Registered Charity No SC037918 established in 2005, is currently raising funds for its conservation to prevent further deterioration - not a complete restoration.**

## **FoGN Funds**

**At the time of writing FoGN have raised over £200k for various projects. Specifically ringfenced for the Monteath is some £90,000 from donations from tours taken by their guides and grant applications to various small trusts and a crowdfunding appeal.**

**These funds have been raised over a sustained period of time. This proposal to Dennistoun Area Partnership (DAP) for NIIF is to obtain the remaining funds required for consolidation of this building and prevent further decay and to conserve and restore it for future generations by making it wind and water tight.**

**FoGN income is derived from:**

- **Membership subscriptions**
- **Donations received from those attending our tours given by our volunteer tour guides. 2026 sees our most extended programme of walking tours.**
- **Donations from groups and organisations which have requested our PowerPoint presentations.**
- **Funding applications to various Trusts and organisations**
- **Sale commission from books, guides, badges and cards.**

**The Monteath repairs should be to the same very high standard as the completed conservation and restoration work on The Black Mausoleum, The King Mausoleum, The Buchanan Sisters' Mausoleum, The Turner Mausoleum, the Egyptian Vaults the Hutchison Mausoleum, Delta Mausoleum, John Adam of Larchgrove, Aiken of Dalmoak Mausoleum, The Jewish Enclosure and the two balcony areas. These works complete the GCC Conservation Management Plan from 2010 with the exception of the Monteath.**

### **REQUEST FOR FUNDING**

**Dennistoun Community Council submit this proposal to DAP for funding from NIIF. We outline the repairs required to make this building wind and watertight and to stop the Mausoleum deteriorating further.**

**1) Site Clearance and Preparation - Clear vegetation; apply weedkiller, erect temporary fencing, provide suitable mobile access for full investigation, erect free standing scaffolding, Install water and windproof enclosure around monument.**

**2) Cleaning - Superheated steam clean exterior and collect run off to provide best environment for repointing the exterior with Lime Mortar.**

**3) Pointing in Lime Mortar 100% exterior.**

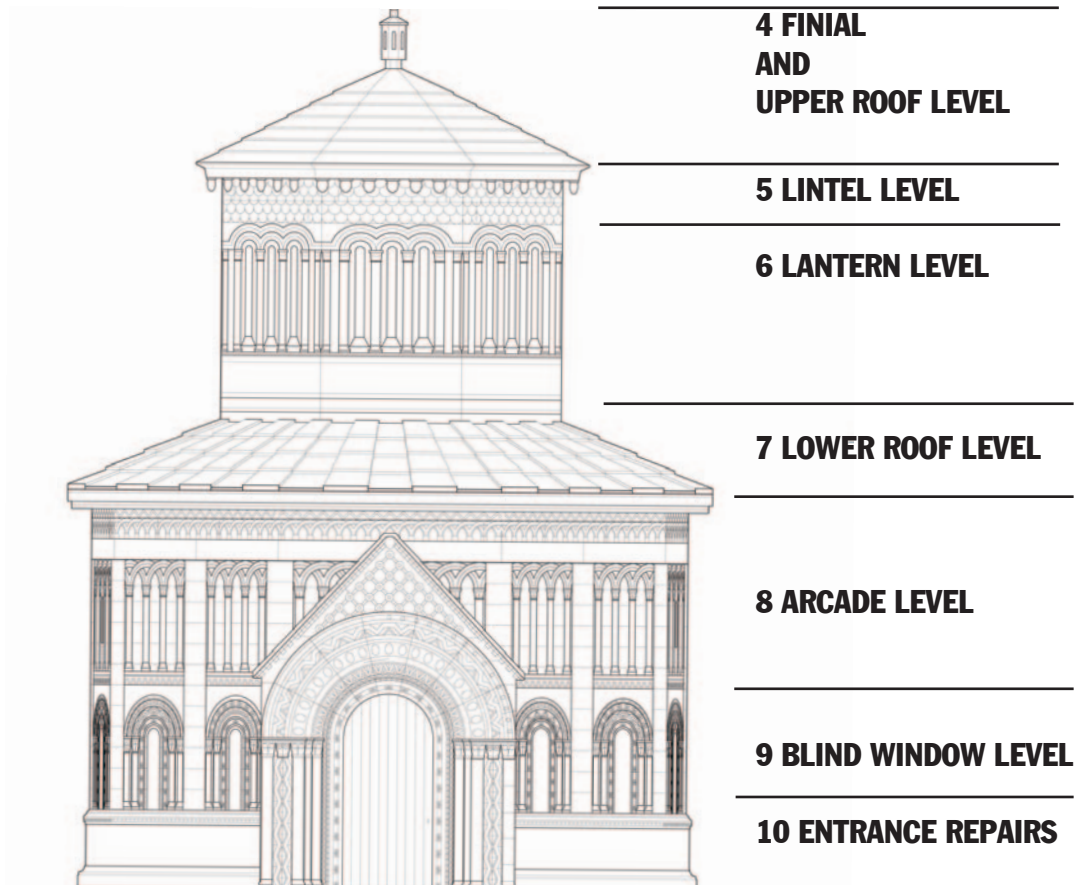
**4) Repairs at Finial and Upper Roof Level - Pin and glue cracks in finial, remove plant growth and apply herbicide, stainless steel cramps to wide joints of eaves course, photograph and consolidate grotesque heads by stone conservator.**

**5) Repairs at Lintel Courses Level - Indent repairs to canted corners of stones, remove rusting iron cramps and replace with stainless steel.**

**6) Repairs at Lantern level – Remove loose capitals and columns for Health and Safety and store inside the mausoleum, remove lighting wiring and fill holes.**

**7) Repairs at Lower Roof Level – Remove Flood Lights, remove plant growth and apply herbicide, dismantle and re-erect slabs, glue and pin missing corners from slabs, replace missing slabs, descale underside of eaves course.**





**8) Repairs at Entablature/Arcade Level – Fill cracks and cramp joints, brush off loose stone, remove loose columns and capitals for Health and Safety and store inside, fill holes where tracery meets entrance roof.**

**9) Repairs at Blind Window level – Remove vegetation from blind windows.**

**10) Repairs at Entrance – Indents at door jambs, replace columns that are stored inside, reduce ground level outside, install gravel drain around building perimeter to prevent flooding, replace entrance steps, repair the original timber door from 1842.**

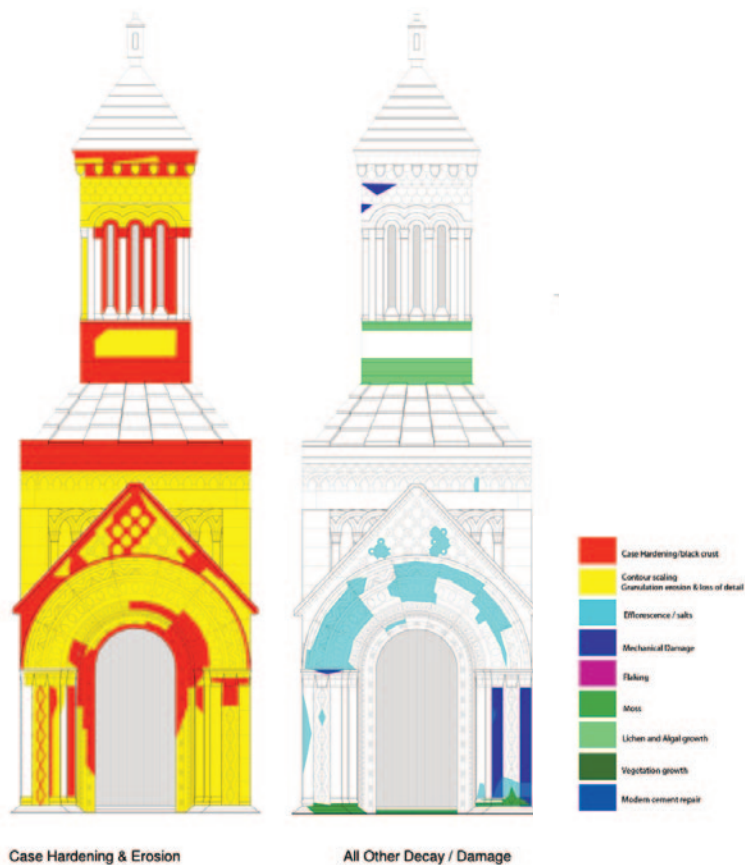
**NOTE** The above does not include repairs/replacement of any of the sandstone columns and capitals on the exterior or repairs to the interior where the cement mortar previously used instead of lime mortar is seriously affecting the sandstone.



## IN CONCLUSION

The above works we have requested to be funded by NIIF will make the building wind and watertight and prevent it deteriorating further.

The aim is that the Monteath Mausoleum and the Glasgow Necropolis may continue for many years for the benefit of education for schools, visitors from Glasgow, other parts of the UK and abroad; It is a most important part of Glasgow's heritage and it has an international reputation. We very much hope that you will view this proposal favourably and feel able put forward this application for NIIF Funding.



The above drawing is from a series of all the facets in a Report by University of Strathclyde Conservation Department which identifies the issues with the building.

FoGN have so far funded clearance of the pigeons and their excrement from the interior walls of the Mausoleum which is detrimental to the stonework and funded an Engineers Report on the structural stability of the mausoleum.

